

DELTA® protects property. Saves energy. Creates comfort.

TECHNICAL DATA SHEET

DELTA®-FOXX / PLUS

Water-resistive Barrier

MATERIAL

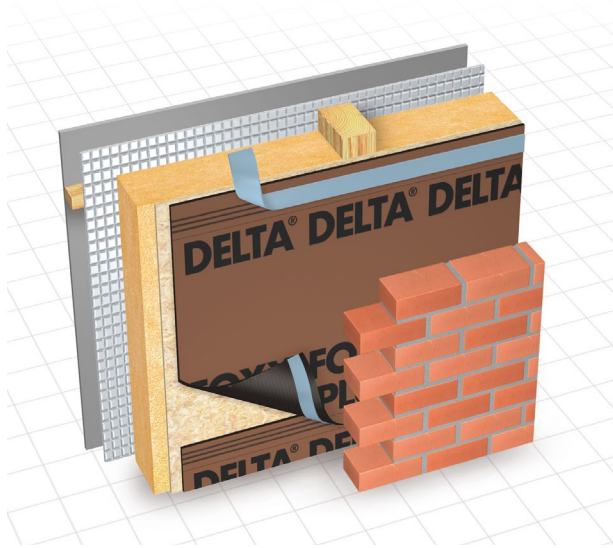
Special, highly tear-resistant polyester non-woven substrate with a vapor permeable but watertight acrylic dispersion coating.

PROPERTIES

DELTA®-FOXX is watertight and will resist the passage of bulk (liquid) water from wind-driven rain and snow. It will act as a drainage plane behind the cladding to channel water to the outside and help protect the building enclosure from damaging effects of moisture infiltration. The extremely high vapor permeability of this WRB allows any moisture within the building enclosure to escape swiftly by diffusion. This membrane withstands the rigors of job-sites, as well as tough wind and weather. Its performance is unaffected by surfactants.

APPLICATION

DELTA®-FOXX is installed outboard of the sheathing prior to the application of the final cladding system. DELTA® Accessories complement the WRB installation. DELTA®-FOXX is also available in the PLUS version with a self-adhesive edge.



DELTA® products support sustainable and energy-efficient building practices, including efforts toward achieving LEED® certification (LEED® for New Construction & Major Renovations, LEED® for Core and Shell, LEED® for Existing Buildings and LEED® for Homes).

For technical support, call our technical support team at 1-888-4DELTA4 (1-888-433-5824) extension 326, or visit www.cosella-dorcken.com.

Technical Data

Product name	DELTA®-FOXX	
Color	red-brown	
Water vapor transmission	1466 g/m ² /24 h	ASTM E96-05, Proc. A
	3763 g/m ² /24 h	ASTM E96-05, Proc. B
Vapor permeance	214 perms [grains/h/ft ² /in Hg]	ASTM E96-05, Proc. A
	550 perms [grains/h/ft ² /in Hg]	ASTM E96-05, Proc. B
Breaking load	MD 104 lb/2in	ASTM D5035-06
	CD 63 lb/2in	
Elongation at break	MD 37 %	ASTM D5035-06
	CD 48 %	
Tear resistance	MD 1916 g	ASTM D1922-06a
	CD 2564 g	
Trapezoid tearing strength	MD 23 lb	ASTM D4533-04
	CD 16 lb	
Fastener pull-through force	211 N	ASTM D3462-03
Water penetration resistance	104 cm	CAN/CGSB-4.2 #26.3-95
Water impact penetration resistance	no water passing	AATCC 42-2000
Flame Spread	5	ASTM E84-09
	NFPA Class A; UBC Class I	
Smoke developed	170	ASTM E84-09
	NFPA Class A; UBC Class I	
Air permeance	< 0.69 l/(s x m ²) @ 75 Pa	ASTM E2178
Temperature range	-40 °F to +176 °F (-40 °C to +80 °C)	
Mass per unit area	> 7.9 oz/yd ² (270 g/m ²)	CSA A220.1-06 4.4.4
Roll weight	approx. 44 lb (20 kg)	
Roll length	164' (50 m)	
Roll width	4' 11" (1.5 m)	
Maximum UV (sunlight) exposure	Always cover as soon as possible. Maximum exposure 16 week.	
DELTA® Accessories	DELTA®-MULTI BAND 2" x 82' DELTA®-FLEXX-BAND 4" x 33' DELTA®-THAN 310 ml cartridge DELTA®-PREN 850 g bottle	

ICC ESR-2932 DELTA® Water-resistive Barriers

Cosella-Dörken Products Inc., 4655 Delta Way, Beamsville, Ontario L0R 1B4
 1-888-4 DELTA 4, (905) 563-3255 Fax: (905) 563-5582
info@cosella-dorcken.com, www.cosella-dorcken.com

A company of the Dörken Group