

SUBSTANTIAL EFFORT HAS BEEN MADE TO ENSURE THAT THE INFORMATION IN THIS DETAIL DRAWING IS ACCURATE. DÖRKEN SYSTEMS INC. CANNOT ACCEPT RESPONSIBILITY FOR ANY ERRORS OR OVERSIGHTS IN THE USE OF THIS MATERIAL OR IN THE PREPARATION OF ARCHITECTURAL OR ENGINEERING PLANS. THE DESIGN PROFESSIONAL MUST RECOGNIZE THAT NO DESIGN DETAIL CAN SUBSTITUTE FOR EXPERIENCED ENGINEERING AND PROFESSIONAL JUDGEMENT.

TITLE:

### DELTA®-DRAIN 6200 HI-X WITH FOUNDATION WALL AND FLOOR SLAB AT FOOTING LEVEL

DRAWN BY: Krzysztof Apriasz C. Tech., CPHC®

DATE: February 17, 2017  
SCALE: NTS

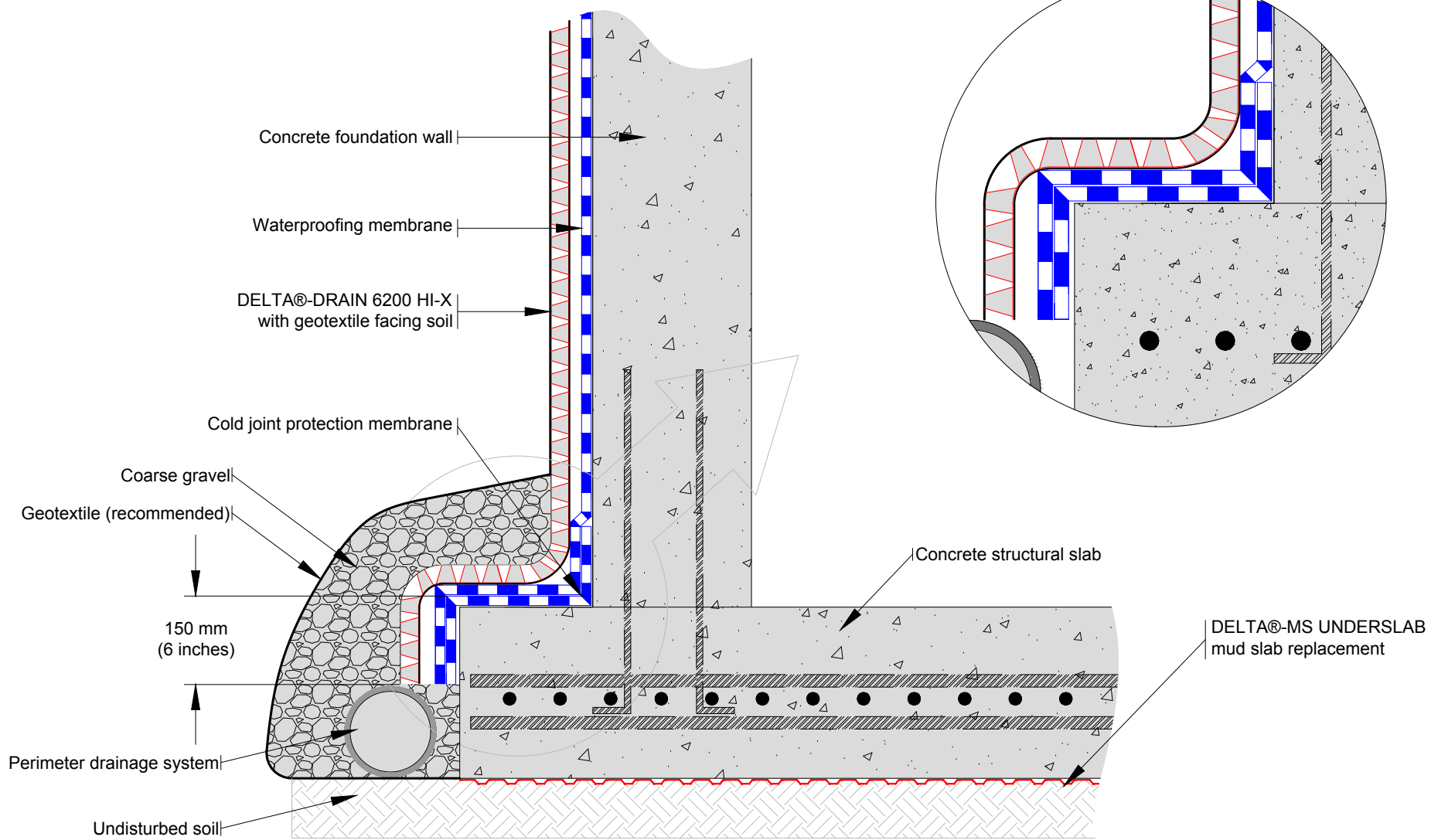
FILE NAME:  
DD6200\_1

**DÖRKEN**

**DELTA®**

4655 DELTA WAY BEAMSVILLE, ON.  
L3J 0T6 CANADA

Note: gravel not shown for clarity



SUBSTANTIAL EFFORT HAS BEEN MADE TO ENSURE THAT THE INFORMATION IN THIS DETAIL DRAWING IS ACCURATE. DÖRKEN SYSTEMS INC. CANNOT ACCEPT RESPONSIBILITY FOR ANY ERRORS OR OVERSIGHTS IN THE USE OF THIS MATERIAL OR IN THE PREPARATION OF ARCHITECTURAL OR ENGINEERING PLANS. THE DESIGN PROFESSIONAL MUST RECOGNIZE THAT NO DESIGN DETAIL CAN SUBSTITUTE FOR EXPERIENCED ENGINEERING AND PROFESSIONAL JUDGEMENT.

TITLE:

### DELTA@-DRAIN 6200 HI-X WITH FOUNDATION WALL ON STRUCTURAL SLAB

DRAWN BY: Krzysztof Apriasz C. Tech., CPHC®

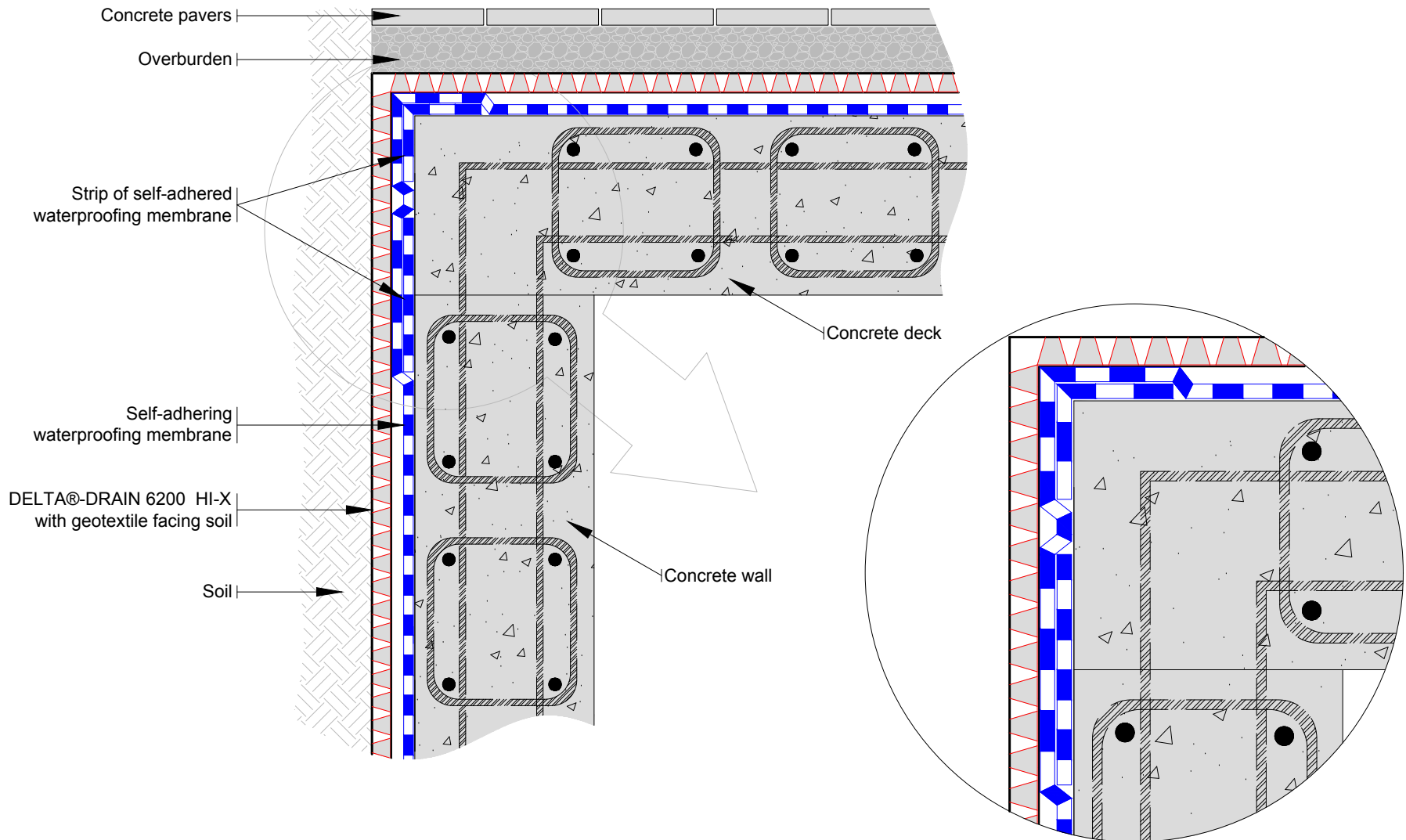
DATE: February 17, 2017  
SCALE: NTS

FILE NAME:  
DD6200\_3



# DELTA®

4655 DELTA WAY BEAMSVILLE, ON.  
L3J 0T6 CANADA



Note: soil and pavers not shown for clarity

SUBSTANTIAL EFFORT HAS BEEN MADE TO ENSURE THAT THE INFORMATION IN THIS DETAIL DRAWING IS ACCURATE. DÖRKEN SYSTEMS INC. CANNOT ACCEPT RESPONSIBILITY FOR ANY ERRORS OR OVERSIGHTS IN THE USE OF THIS MATERIAL OR IN THE PREPARATION OF ARCHITECTURAL OR ENGINEERING PLANS. THE DESIGN PROFESSIONAL MUST RECOGNIZE THAT NO DESIGN DETAIL CAN SUBSTITUTE FOR EXPERIENCED ENGINEERING AND PROFESSIONAL JUDGEMENT.

TITLE:

**DELTA®-DRAIN 6200 HI-X WITH PLAZA DECK TO WALL TIE-IN DETAIL**

DRAWN BY: Krzysztof Apriasz C. Tech., CPHC®

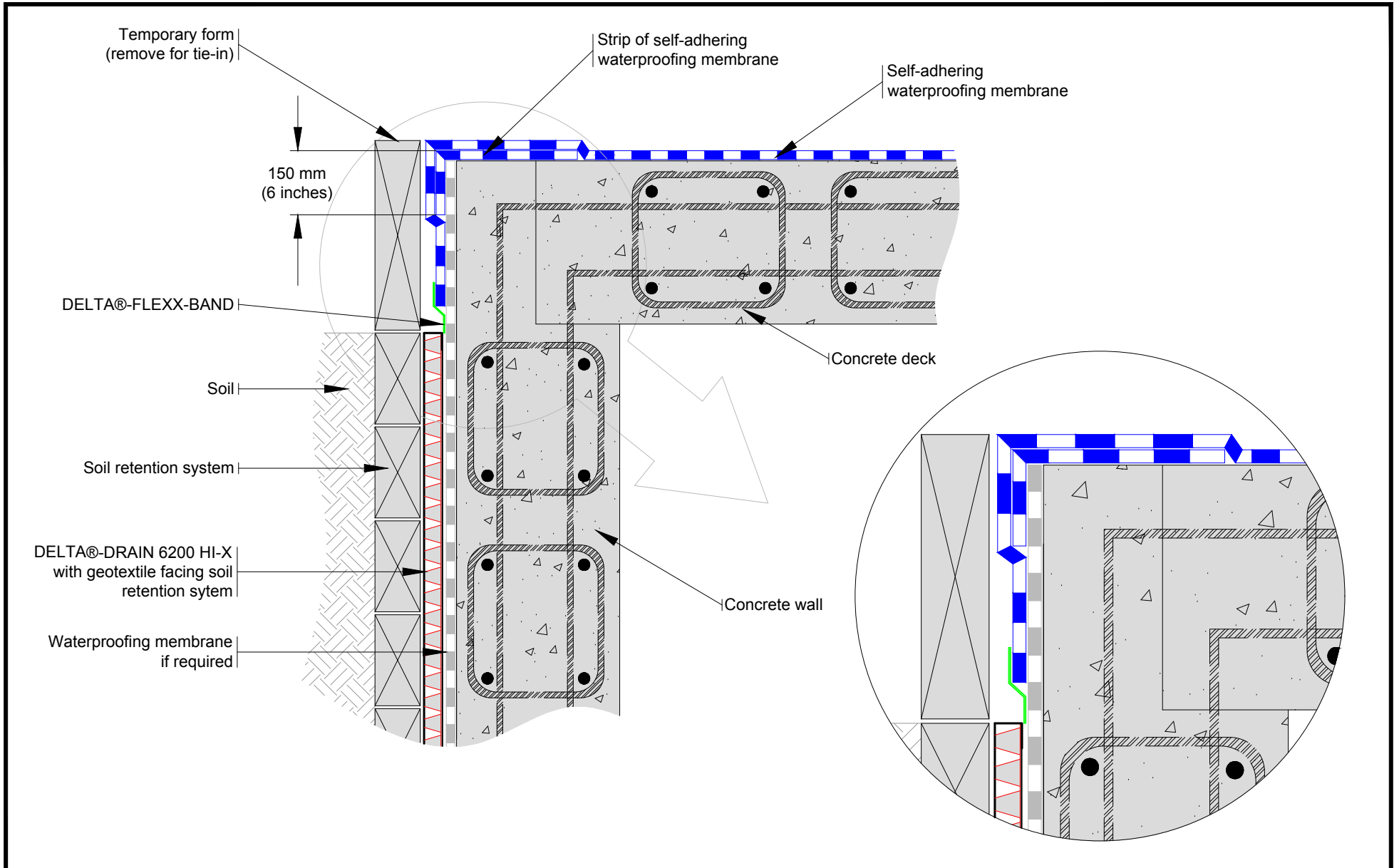
DATE: February 17, 2017  
SCALE: NTS

FILE NAME:  
DD6200\_4

**DÖRKEN**

**DELTA®**

4655 DELTA WAY BEAMSVILLE, ON.  
L3J 0T6 CANADA



SUBSTANTIAL EFFORT HAS BEEN MADE TO ENSURE THAT THE INFORMATION IN THIS DETAIL DRAWING IS ACCURATE. DÖRKEN SYSTEMS INC. CANNOT ACCEPT RESPONSIBILITY FOR ANY ERRORS OR OVERSIGHTS IN THE USE OF THIS MATERIAL OR IN THE PREPARATION OF ARCHITECTURAL OR ENGINEERING PLANS. THE DESIGN PROFESSIONAL MUST RECOGNIZE THAT NO DESIGN DETAIL CAN SUBSTITUTE FOR EXPERIENCED ENGINEERING AND PROFESSIONAL JUDGEMENT.

TITLE:

DELTA®-DRAIN 6200 HI-X with PLAZA DECK  
WATERPROOFING TIE-IN TO  
VERTICAL BLIND SIDE WATERPROOFING DETAIL

DRAWN BY: Krzysztof Apriasz C. Tech., CPHC®

DATE: February 17, 2017  
SCALE: NTS

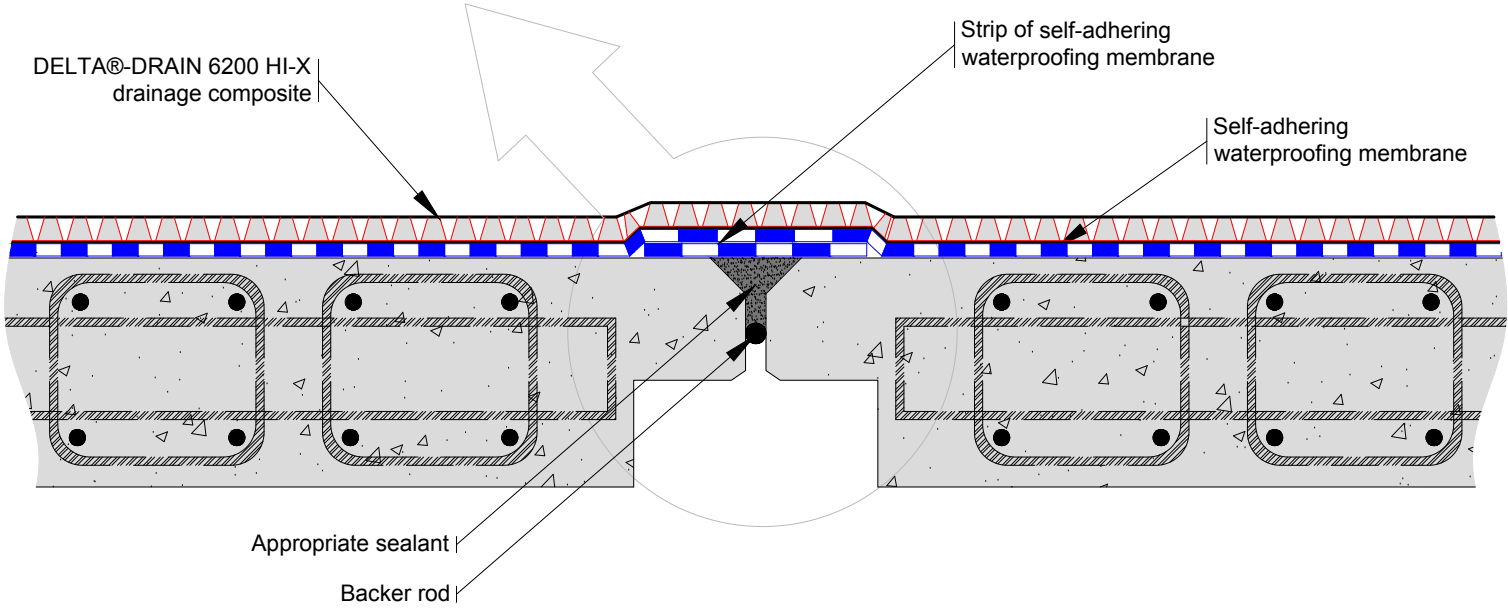
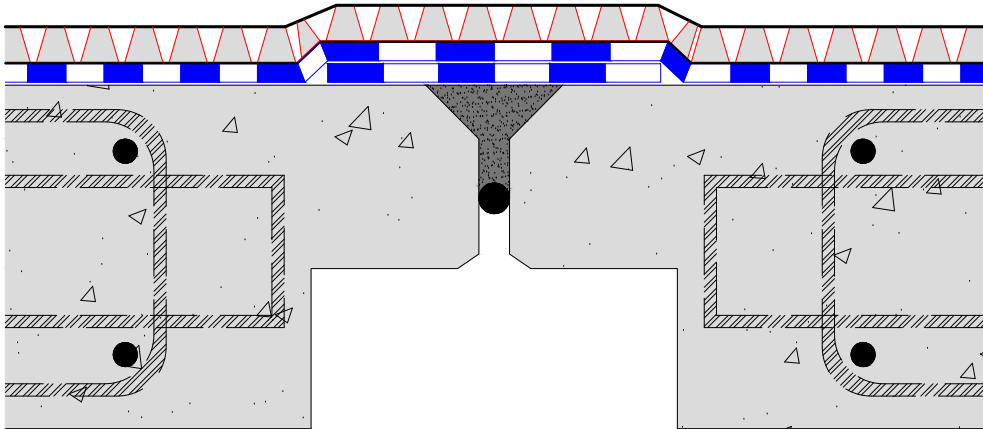
FILE NAME:  
DD6200\_5

 DÖRKEN

**DELTA®**

4655 DELTA WAY BEAMSVILLE, ON.  
L3J 0T6 CANADA

Note: For joint where movement is expected (active joints) see expansion joint cover detail



SUBSTANTIAL EFFORT HAS BEEN MADE TO ENSURE THAT THE INFORMATION IN THIS DETAIL DRAWING IS ACCURATE. DÖRKEN SYSTEMS INC. CANNOT ACCEPT RESPONSIBILITY FOR ANY ERRORS OR OVERSIGHTS IN THE USE OF THIS MATERIAL OR IN THE PREPARATION OF ARCHITECTURAL OR ENGINEERING PLANS. THE DESIGN PROFESSIONAL MUST RECOGNIZE THAT NO DESIGN DETAIL CAN SUBSTITUTE FOR EXPERIENCED ENGINEERING AND PROFESSIONAL JUDGEMENT.

TITLE:

**DELTA®-DRAIN 6200 HI-X WITH PASSIVE JOINT COVER DETAIL**

DRAWN BY: Krzysztof Apriasz C. Tech., CPHC®

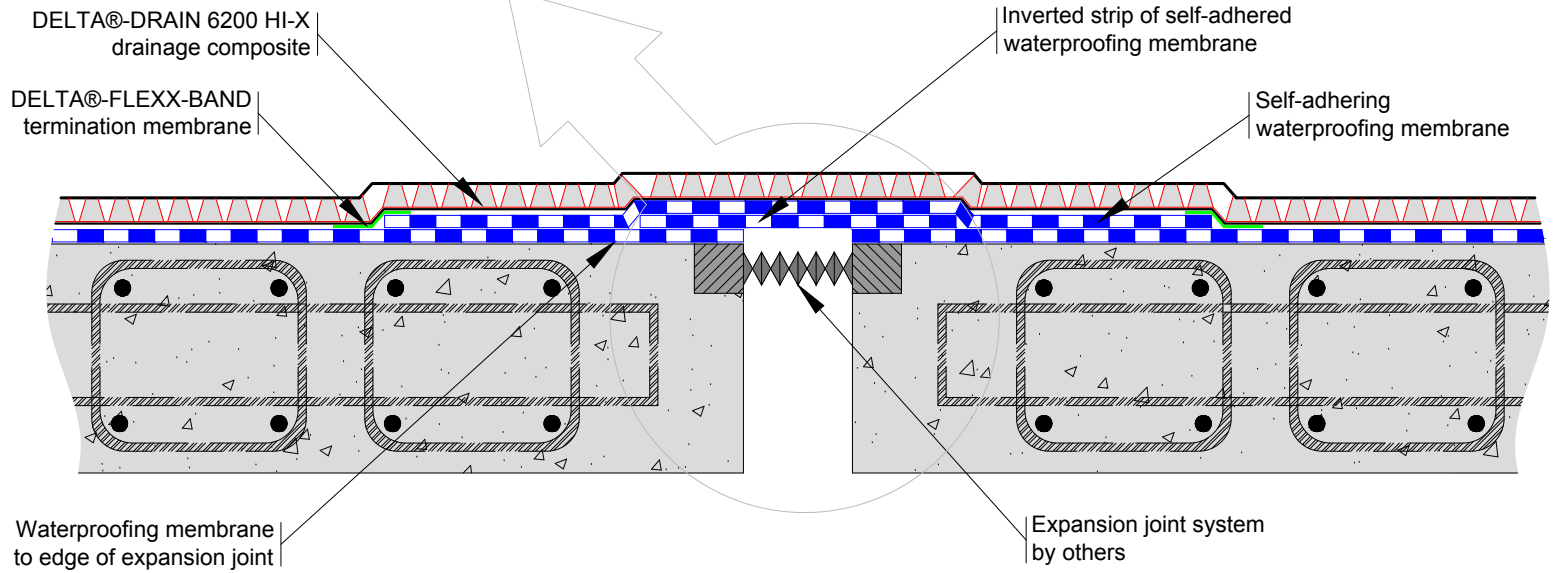
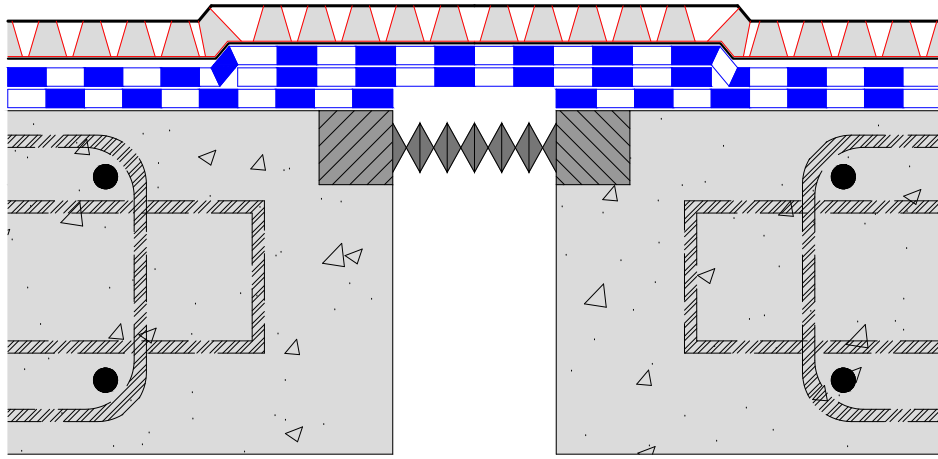
DATE: February 17, 2017  
SCALE: NTS

FILE NAME:  
DD6200\_6

**DÖRKEN**

**DELTA®**

4655 DELTA WAY BEAMSVILLE, ON.  
L3J 0T6 CANADA



SUBSTANTIAL EFFORT HAS BEEN MADE TO ENSURE THAT THE INFORMATION IN THIS DETAIL DRAWING IS ACCURATE. DÖRKEN SYSTEMS INC. CANNOT ACCEPT RESPONSIBILITY FOR ANY ERRORS OR OVERSIGHTS IN THE USE OF THIS MATERIAL OR IN THE PREPARATION OF ARCHITECTURAL OR ENGINEERING PLANS. THE DESIGN PROFESSIONAL MUST RECOGNIZE THAT NO DESIGN DETAIL CAN SUBSTITUTE FOR EXPERIENCED ENGINEERING AND PROFESSIONAL JUDGEMENT.

TITLE:

**DELTA®-DRAIN 6200 HI-X WITH EXPANSION JOINT COVERDECK DETAIL WITH MOVEMENT LESS THAN 13 mm ( $\frac{1}{2}$  INCHES)**

DRAWN BY: Krzysztof Apriasz C. Tech., CPHC®

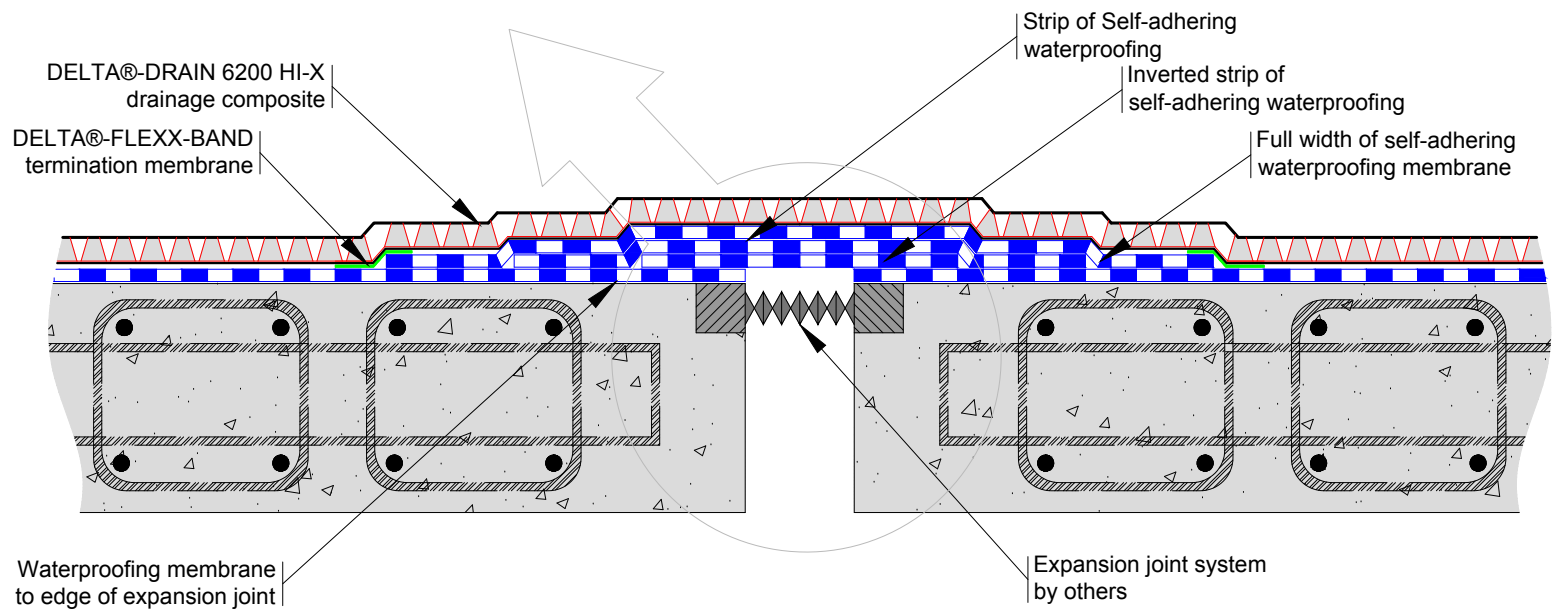
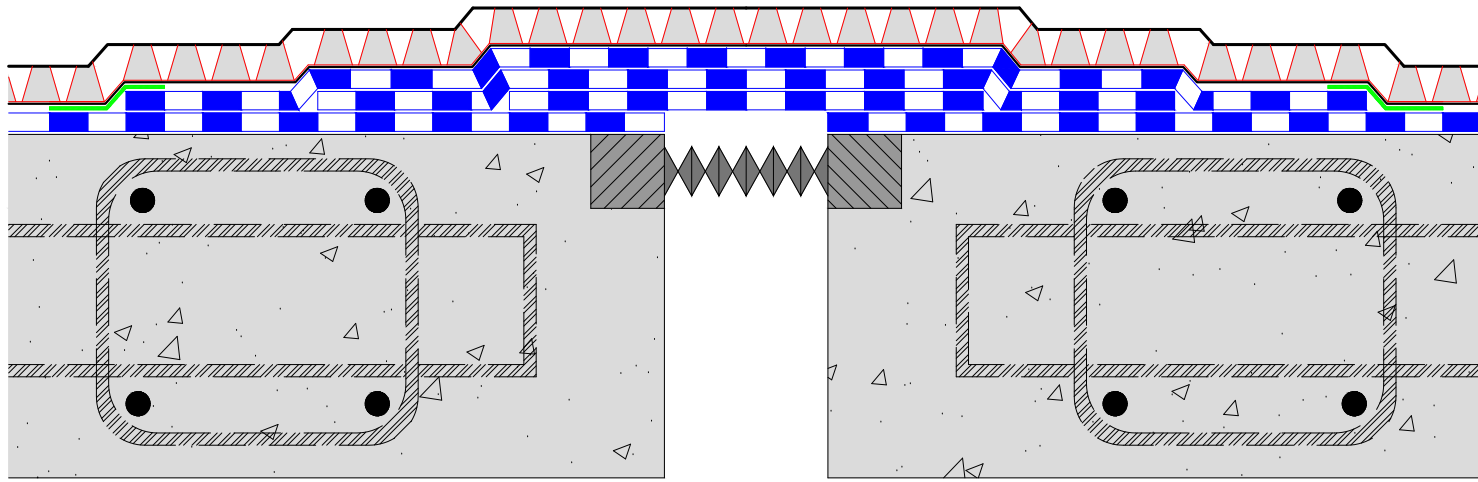
DATE: February 17, 2017  
SCALE: NTS

FILE NAME:  
DD6200\_7



**DELTA®**

4655 DELTA WAY BEAMSVILLE, ON.  
L3J 0T6 CANADA



SUBSTANTIAL EFFORT HAS BEEN MADE TO ENSURE THAT THE INFORMATION IN THIS DETAIL DRAWING IS ACCURATE. DÖRKEN SYSTEMS INC. CANNOT ACCEPT RESPONSIBILITY FOR ANY ERRORS OR OVERSIGHTS IN THE USE OF THIS MATERIAL OR IN THE PREPARATION OF ARCHITECTURAL OR ENGINEERING PLANS. THE DESIGN PROFESSIONAL MUST RECOGNIZE THAT NO DESIGN DETAIL CAN SUBSTITUTE FOR EXPERIENCED ENGINEERING AND PROFESSIONAL JUDGEMENT.

TITLE:

DELTA®-DRAIN 6200 HI-X WITH EXPANSION JOINT  
COVER DECK DETAIL WITH MOVEMENT MORE  
THAN 13 mm ( $\frac{1}{2}$  INCHES)

DRAWN BY: Krzysztof Apriasz C. Tech., CPHC®

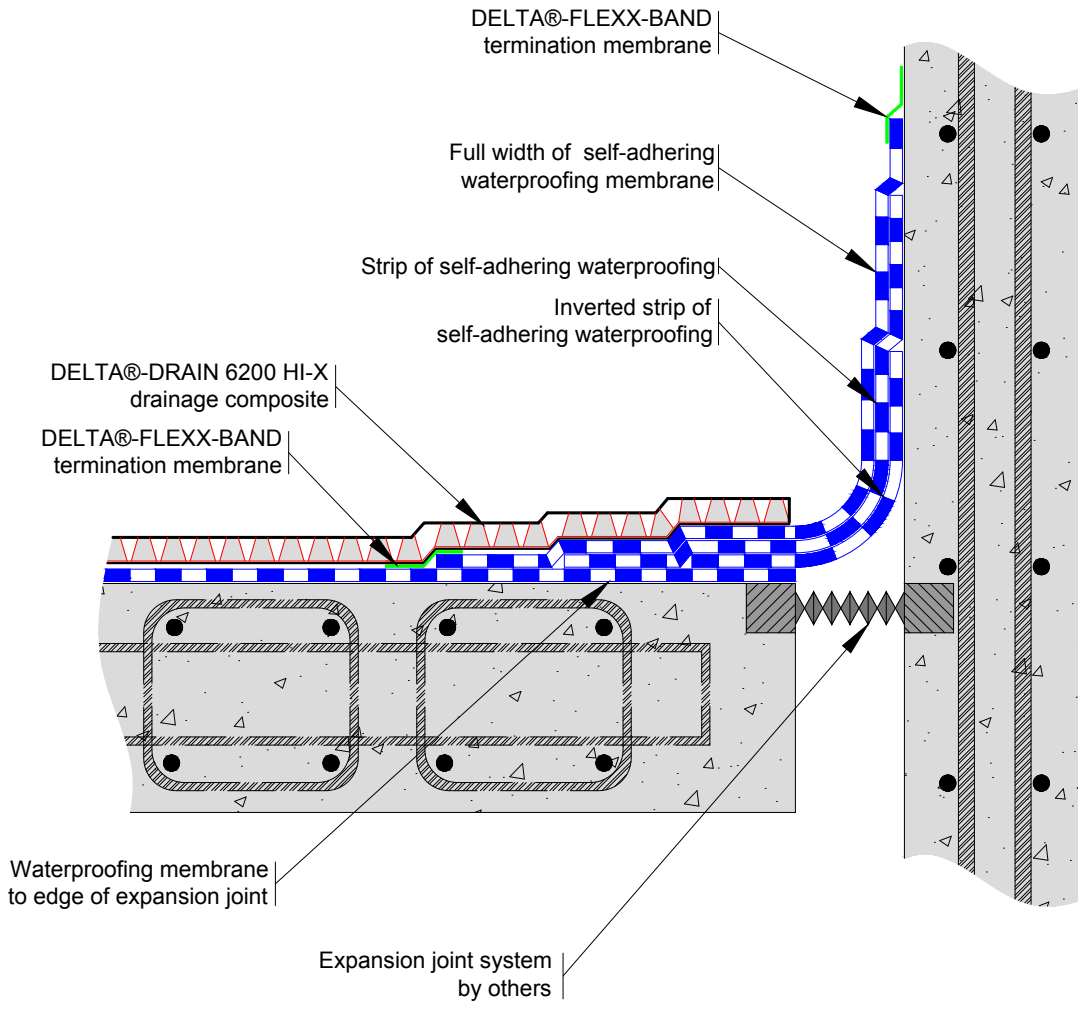
DATE: February 17, 2017  
SCALE: NTS

FILE NAME:  
DD6200\_8

 DÖRKEN

**DELTA®**

4655 DELTA WAY BEAMSVILLE, ON.  
L3J 0T6 CANADA



SUBSTANTIAL EFFORT HAS BEEN MADE TO ENSURE THAT THE INFORMATION IN THIS DETAIL DRAWING IS ACCURATE. DÖRKEN SYSTEMS INC. CANNOT ACCEPT RESPONSIBILITY FOR ANY ERRORS OR OVERSIGHTS IN THE USE OF THIS MATERIAL OR IN THE PREPARATION OF ARCHITECTURAL OR ENGINEERING PLANS. THE DESIGN PROFESSIONAL MUST RECOGNIZE THAT NO DESIGN DETAIL CAN SUBSTITUTE FOR EXPERIENCED ENGINEERING AND PROFESSIONAL JUDGEMENT.

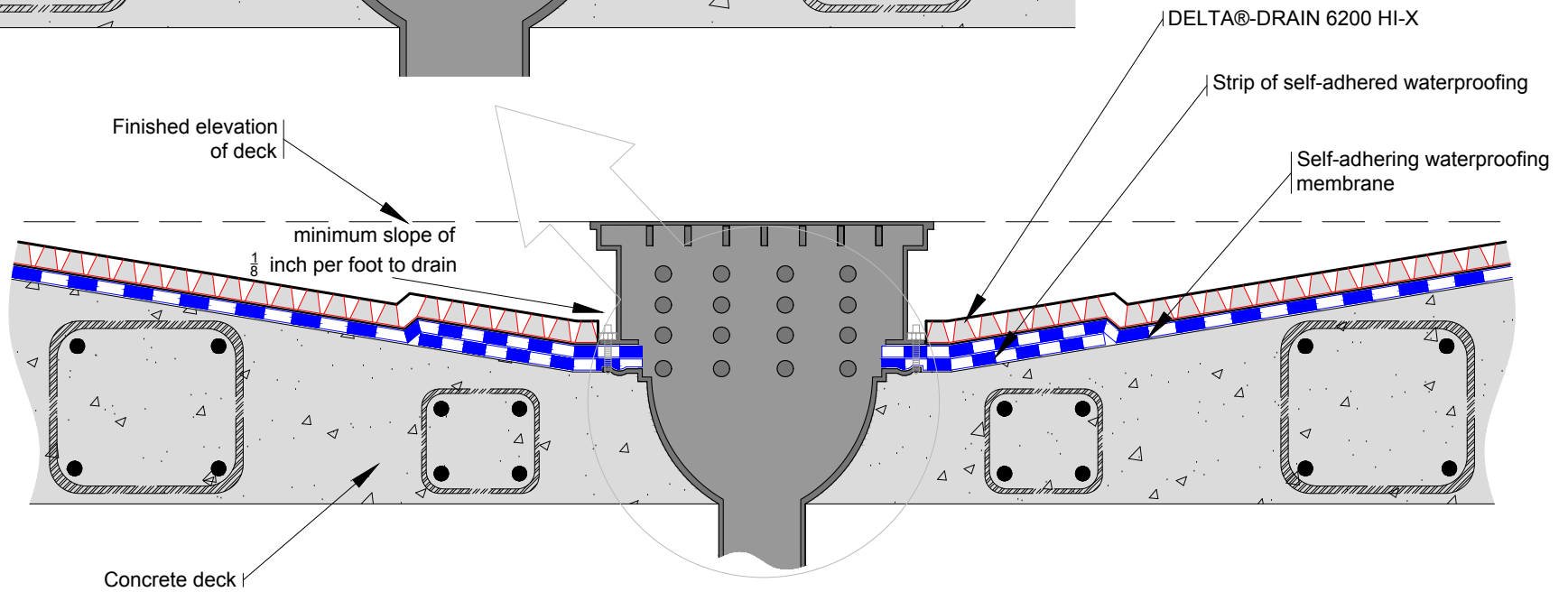
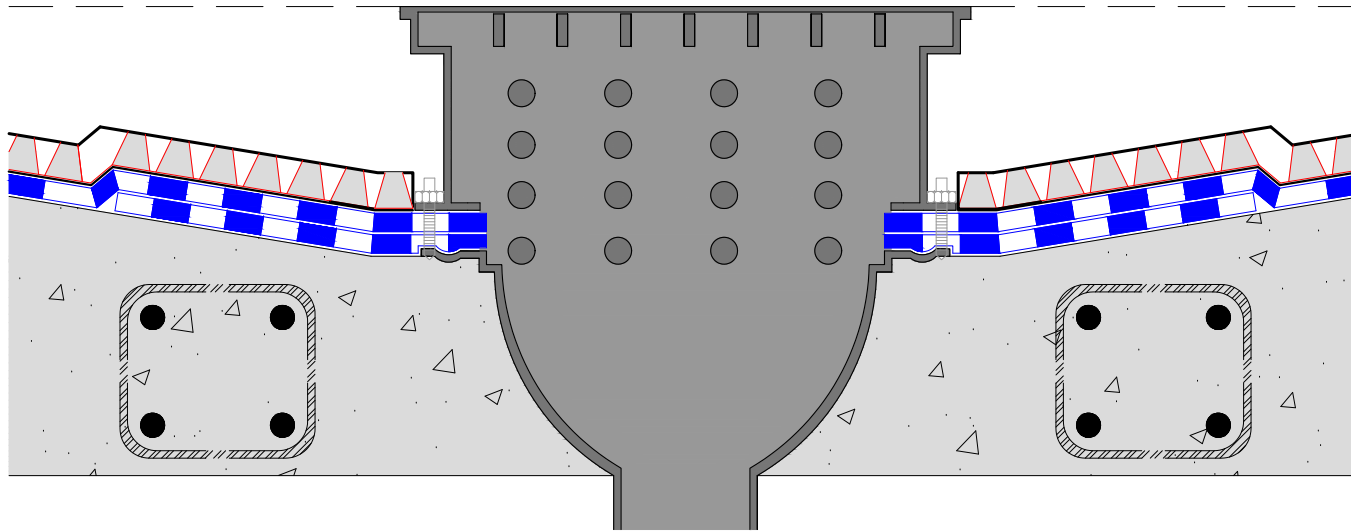
TITLE:  
**DELTA®-DRAIN 6200 HI-X EXPANSION  
 JOINT COVER DECK TO WALL  
 JUNCTION DETAIL**



DRAWN BY: Krzysztof Apiasz C. Tech., CPHC®  
 Date: February 18, 2011 | File Name: DD6200\_09

4655 DELTA WAY BEAMSVILLE, ON.  
 L3J 0T6 CANADA





SUBSTANTIAL EFFORT HAS BEEN MADE TO ENSURE THAT THE INFORMATION IN THIS DETAIL DRAWING IS ACCURATE. DÖRKEN SYSTEMS INC. CANNOT ACCEPT RESPONSIBILITY FOR ANY ERRORS OR OVERSIGHTS IN THE USE OF THIS MATERIAL OR IN THE PREPARATION OF ARCHITECTURAL OR ENGINEERING PLANS. THE DESIGN PROFESSIONAL MUST RECOGNIZE THAT NO DESIGN DETAIL CAN SUBSTITUTE FOR EXPERIENCED ENGINEERING AND PROFESSIONAL JUDGEMENT.

TITLE:

## DELTA®-DRAIN 6200 HI-X WITH TYPICAL DRAIN DETAIL

DRAWN BY: Krzysztof Apriasz C. Tech., CPHC®

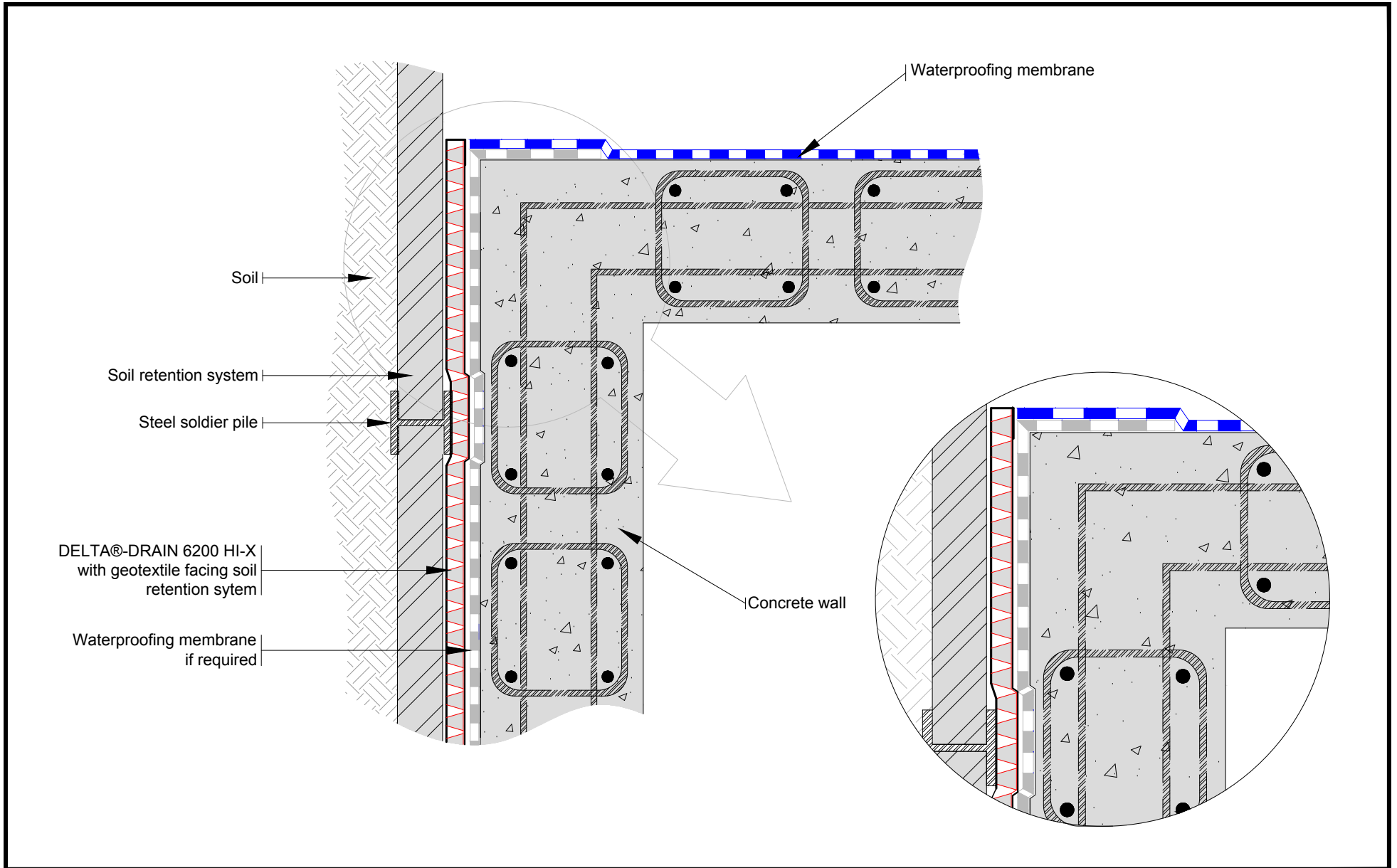
DATE: February 17, 2017  
SCALE: NTS

FILE NAME:  
DD6200\_9

 DÖRKEN

**DELTA®**

4655 DELTA WAY BEAMSVILLE, ON.  
L3J 0T6 CANADA



SUBSTANTIAL EFFORT HAS BEEN MADE TO ENSURE THAT THE INFORMATION IN THIS DETAIL DRAWING IS ACCURATE. DÖRKEN SYSTEMS INC. CANNOT ACCEPT RESPONSIBILITY FOR ANY ERRORS OR OVERSIGHTS IN THE USE OF THIS MATERIAL OR IN THE PREPARATION OF ARCHITECTURAL OR ENGINEERING PLANS. THE DESIGN PROFESSIONAL MUST RECOGNIZE THAT NO DESIGN DETAIL CAN SUBSTITUTE FOR EXPERIENCED ENGINEERING AND PROFESSIONAL JUDGEMENT.

TITLE:

DELTA®-DRAIN 6200 HI-X TIE-IN TO  
 SELF-ADHERING  
 WATERPROOFING MEMBRANE DETAIL

DRAWN BY: Krzysztof Apriasz C. Tech., CPHC®

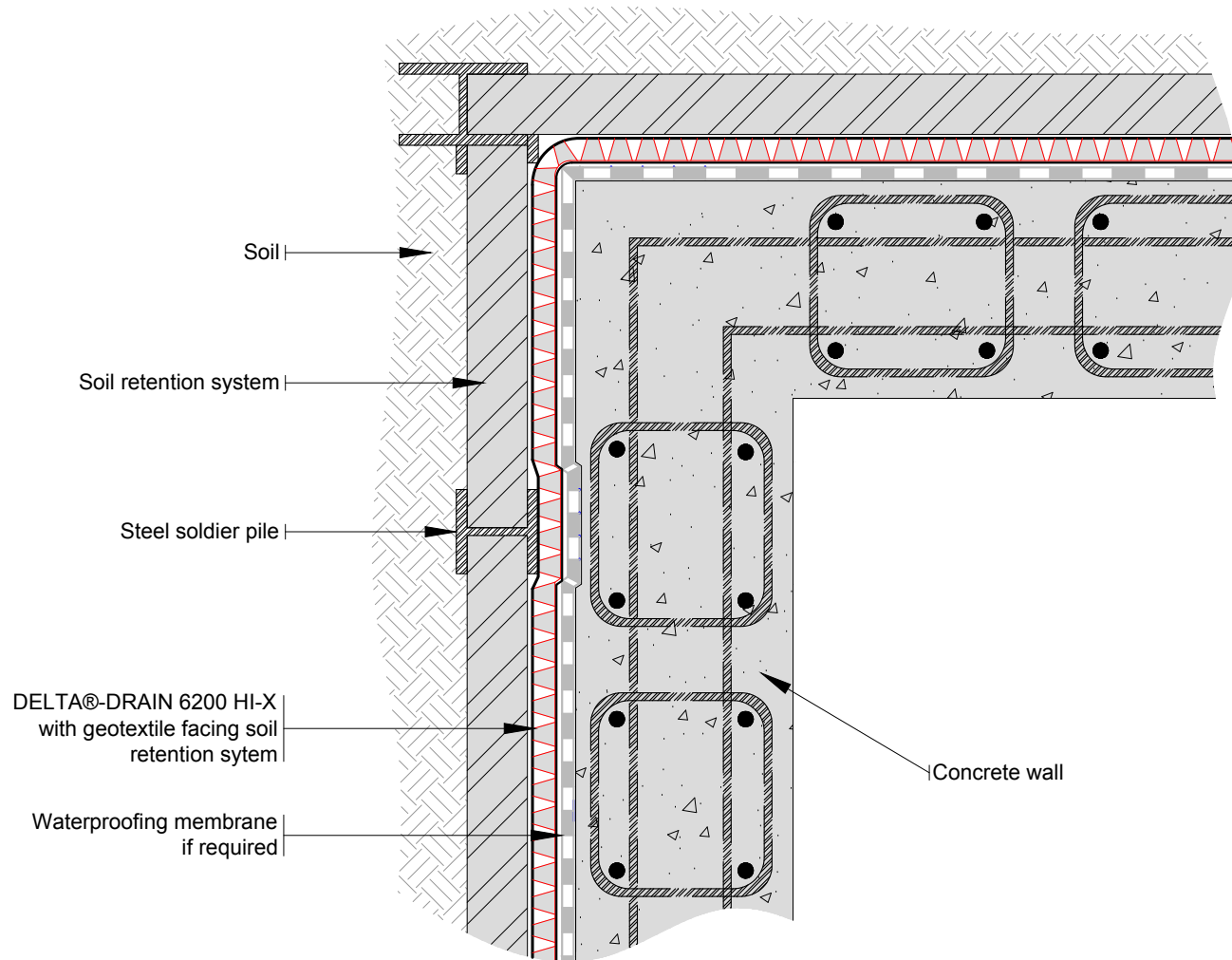
DATE: February 17, 2017  
 SCALE: NTS

FILE NAME:  
 DD6200\_12

 DÖRKEN

**DELTA®**

4655 DELTA WAY BEAMSVILLE, ON.  
 L3J 0T6 CANADA



SUBSTANTIAL EFFORT HAS BEEN MADE TO ENSURE THAT THE INFORMATION IN THIS DETAIL DRAWING IS ACCURATE. DÖRKEN SYSTEMS INC. CANNOT ACCEPT RESPONSIBILITY FOR ANY ERRORS OR OVERSIGHTS IN THE USE OF THIS MATERIAL OR IN THE PREPARATION OF ARCHITECTURAL OR ENGINEERING PLANS. THE DESIGN PROFESSIONAL MUST RECOGNIZE THAT NO DESIGN DETAIL CAN SUBSTITUTE FOR EXPERIENCED ENGINEERING AND PROFESSIONAL JUDGEMENT.

TITLE:

### TYPICAL CORNER DETAIL DELTA®-DRAIN 6200 HI-X

DRAWN BY: Krzysztof Apriasz C. Tech., CPHC®

DATE: February 17, 2017  
SCALE: NTS

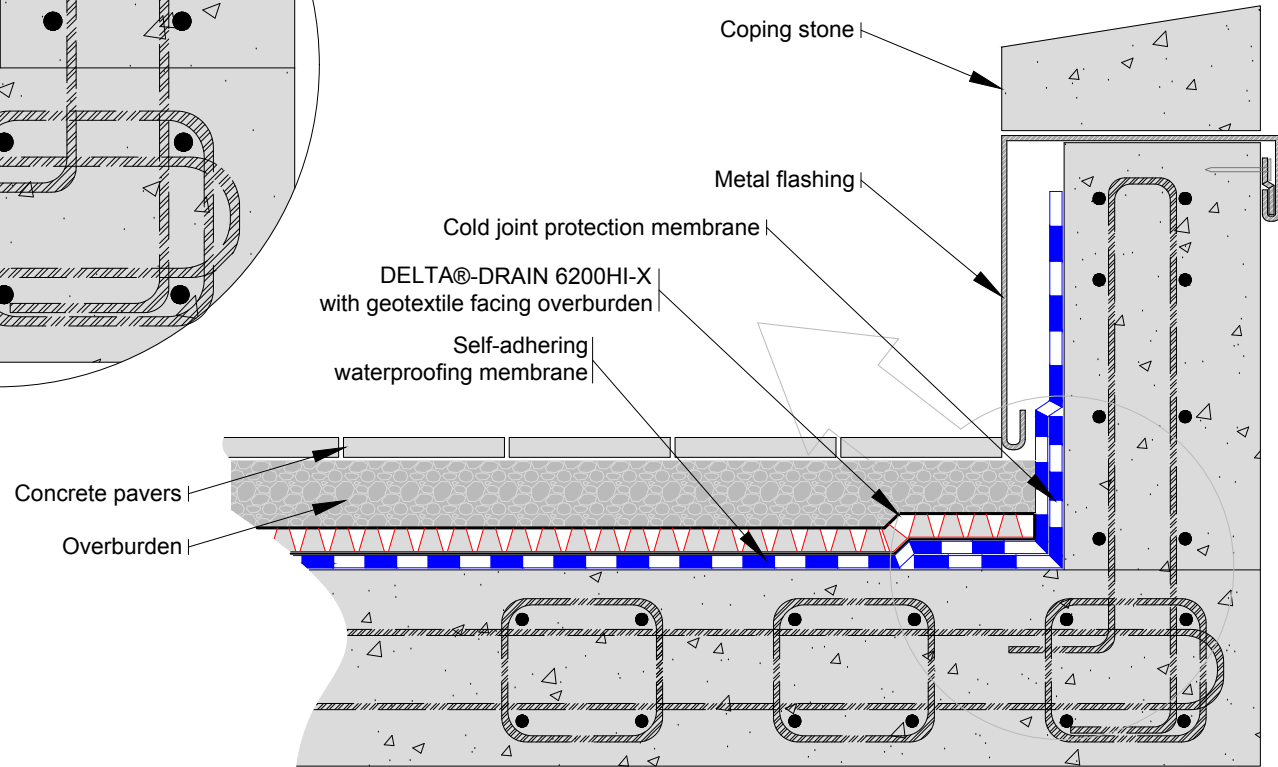
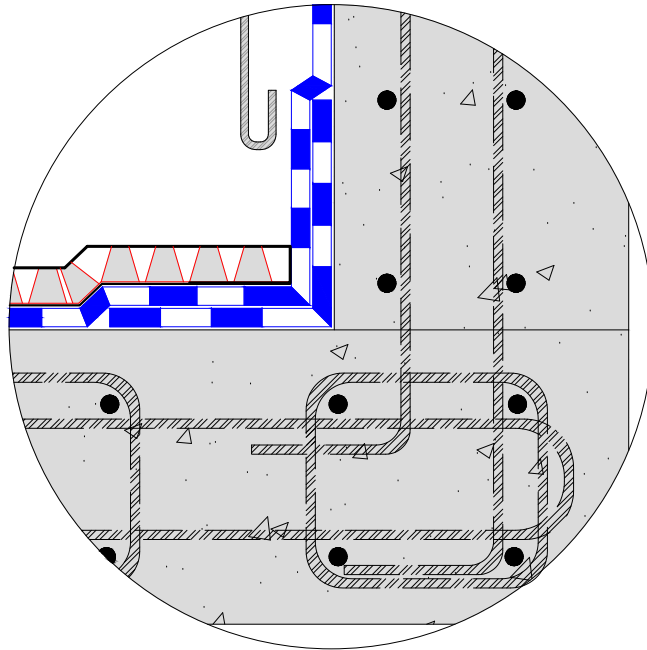
FILE NAME:  
DD6200\_13

 DÖRKEN

**DELTA®**

4655 DELTA WAY BEAMSVILLE, ON.  
L3J 0T6 CANADA

Note: overburden not shown for clarity



SUBSTANTIAL EFFORT HAS BEEN MADE TO ENSURE THAT THE INFORMATION IN THIS DETAIL DRAWING IS ACCURATE. DÖRKEN SYSTEMS INC. CANNOT ACCEPT RESPONSIBILITY FOR ANY ERRORS OR OVERSIGHTS IN THE USE OF THIS MATERIAL OR IN THE PREPARATION OF ARCHITECTURAL OR ENGINEERING PLANS. THE DESIGN PROFESSIONAL MUST RECOGNIZE THAT NO DESIGN DETAIL CAN SUBSTITUTE FOR EXPERIENCED ENGINEERING AND PROFESSIONAL JUDGEMENT.

TITLE:

### TYPICAL PARAPET DETAIL WITH DELTA®-DRAIN 6200 HI-X

DRAWN BY: Krzysztof Apriasz C. Tech., CPHC®

DATE: February 17, 2017  
SCALE: NTS

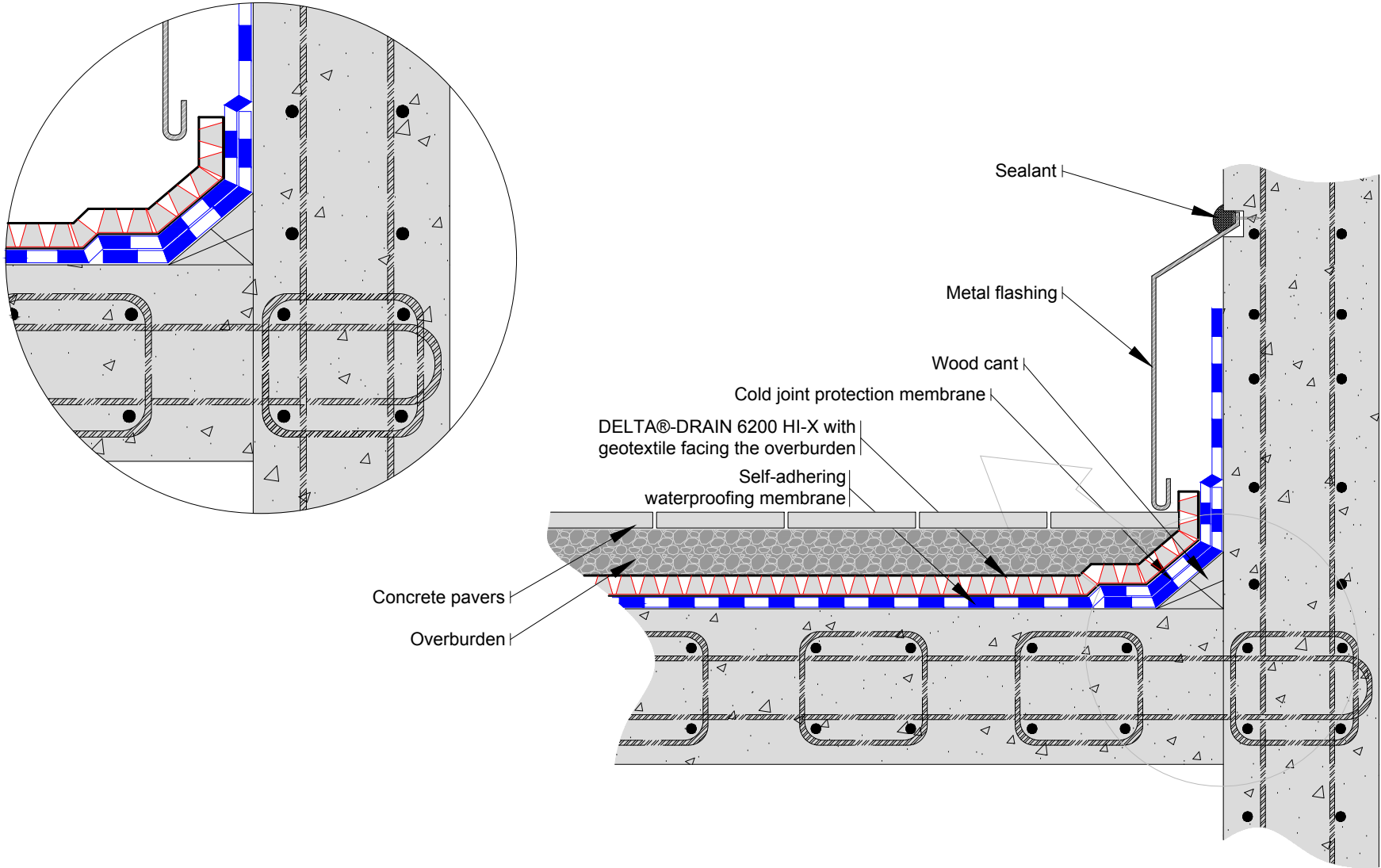
FILE NAME:  
DD6200\_14

 DÖRKEN

**DELTA®**

4655 DELTA WAY BEAMSVILLE, ON.  
L3J 0T6 CANADA

Note: overburden not shown for clarity



SUBSTANTIAL EFFORT HAS BEEN MADE TO ENSURE THAT THE INFORMATION IN THIS DETAIL DRAWING IS ACCURATE. DÖRKEN SYSTEMS INC. CANNOT ACCEPT RESPONSIBILITY FOR ANY ERRORS OR OVERSIGHTS IN THE USE OF THIS MATERIAL OR IN THE PREPARATION OF ARCHITECTURAL OR ENGINEERING PLANS. THE DESIGN PROFESSIONAL MUST RECOGNIZE THAT NO DESIGN DETAIL CAN SUBSTITUTE FOR EXPERIENCED ENGINEERING AND PROFESSIONAL JUDGEMENT.

TITLE:

### TYPICAL ROOF EDGE TERMINATION DETAIL WITH DELTA®-DRAIN 6200 HI-X

DRAWN BY: Krzysztof Apriasz C. Tech., CPHC®

DATE: February 17, 2017  
SCALE: NTS

FILE NAME:  
DD6200\_15

**DÖRKEN**

**DELTA®**

4655 DELTA WAY BEAMSVILLE, ON.  
L3J 0T6 CANADA