

DELTA®-DRY & LATH meets Acceptance Criteria for Moisture Drainage Systems Used with Exterior Cement Plaster or Adhered Veneer Walls (AC356) and Acceptance Criteria for Glass Fiber Lath in Cementitious Exterior Wall Coating or Exterior Cement Plaster (Stucco) (AC275). [IAPMO UES ER-323](http://iapmo.com/ues/er-323).

For proper performance of DELTA®-DRY ensure top and bottom remain open to allow ventilation and drainage

SUBSTANTIAL EFFORT HAS BEEN MADE TO ENSURE THAT THE INFORMATION IN THIS DETAIL DRAWING IS ACCURATE. DÖRKEN SYSTEMS INC. CANNOT ACCEPT RESPONSIBILITY FOR ANY ERRORS OR OVERSIGHTS IN THE USE OF THIS MATERIAL OR IN THE PREPARATION OF ARCHITECTURAL OR ENGINEERING PLANS. THE DESIGN PROFESSIONAL MUST RECOGNIZE THAT NO DESIGN DETAIL CAN SUBSTITUTE FOR EXPERIENCED ENGINEERING AND PROFESSIONAL JUDGEMENT.

TITLE:

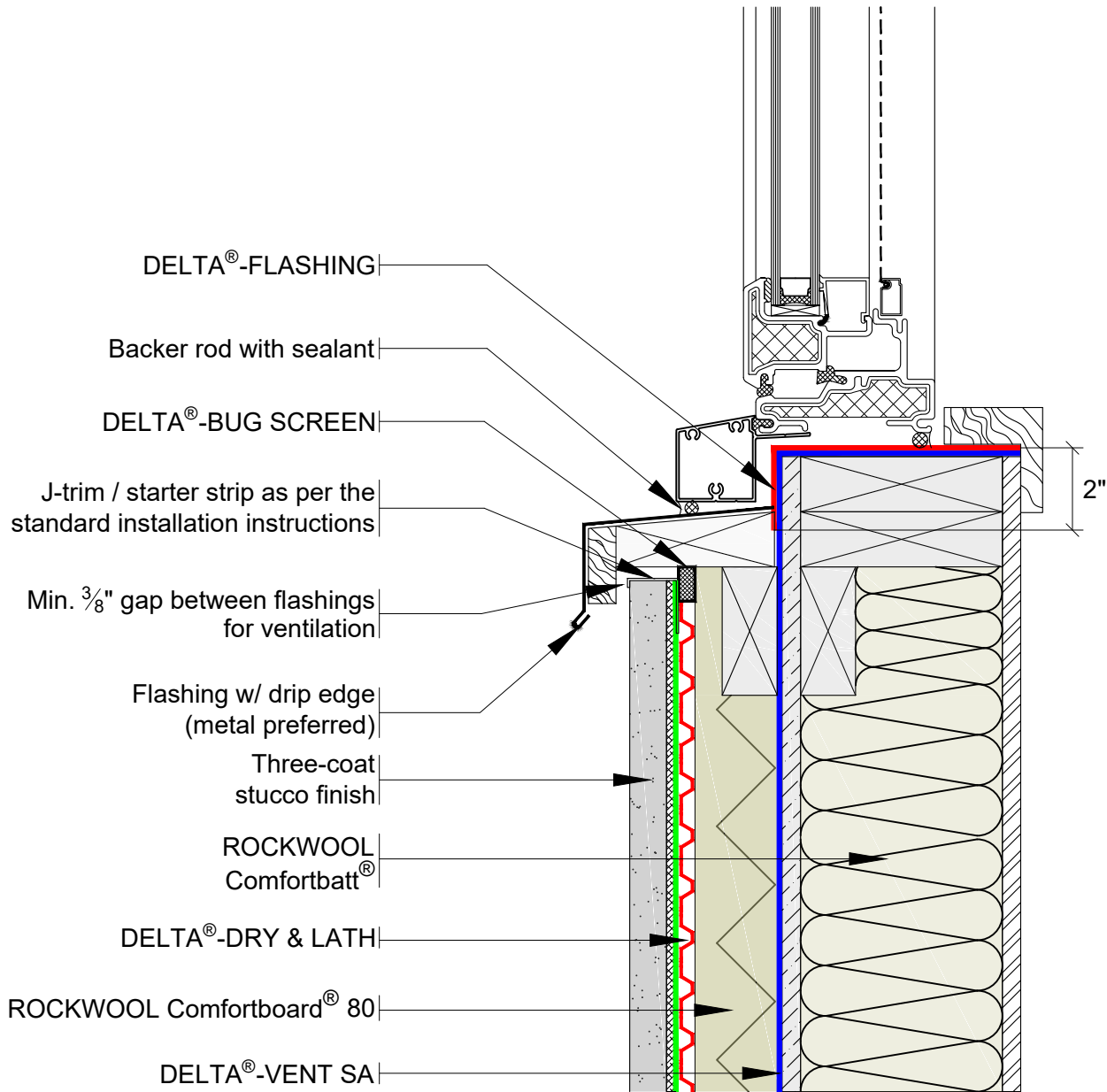
DELTA®-DRY & LATH WITH
 EXTERIOR INSULATION
 TYPICAL BASE OF WALL AT
 FOUNDATION

DRAWN BY: Krzysztof Apriasz C. Tech. CPHC®

DÖRKEN

DELTA®

4655 DELTA WAY BEAMSVILLE, ON. L0R 1B4 CANADA
 1-888-433-5824 or 1-905-563-3255



For proper performance of DELTA®-DRY ensure top and bottom remain open to allow ventilation and drainage

SUBSTANTIAL EFFORT HAS BEEN MADE TO ENSURE THAT THE INFORMATION IN THIS DETAIL DRAWING IS ACCURATE. DÖRKEN SYSTEMS INC. CANNOT ACCEPT RESPONSIBILITY FOR ANY ERRORS OR OVERSIGHTS IN THE USE OF THIS MATERIAL OR IN THE PREPARATION OF ARCHITECTURAL OR ENGINEERING PLANS. THE DESIGN PROFESSIONAL MUST RECOGNIZE THAT NO DESIGN DETAIL CAN SUBSTITUTE FOR EXPERIENCED ENGINEERING AND PROFESSIONAL JUDGEMENT.

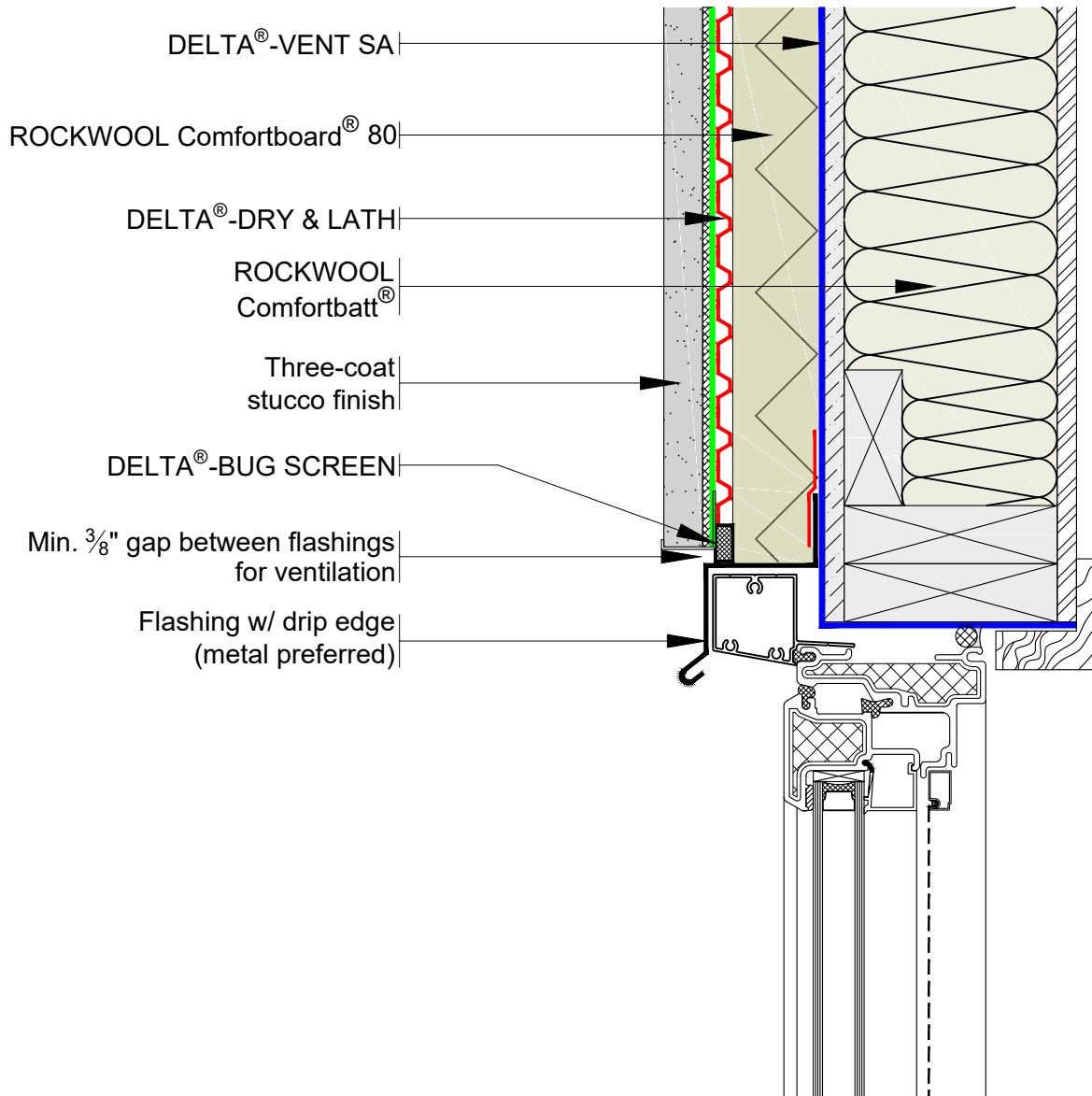
TITLE:

DELTA®-DRY & LATH WITH EXTERIOR INSULATION TYPICAL WINDOW SILL DETAIL

DRAWN BY: Krzysztof Apiasz C. Tech. CPHC®



4655 DELTA WAY BEAMSVILLE, ON. L0R 1B4 CANADA
1-888-433-5824 or 1-905-563-3255



For proper performance of DELTA®-DRY ensure top and bottom remain open to allow ventilation and drainage

SUBSTANTIAL EFFORT HAS BEEN MADE TO ENSURE THAT THE INFORMATION IN THIS DETAIL DRAWING IS ACCURATE. DÖRKEN SYSTEMS INC. CANNOT ACCEPT RESPONSIBILITY FOR ANY ERRORS OR OVERSIGHTS IN THE USE OF THIS MATERIAL OR IN THE PREPARATION OF ARCHITECTURAL OR ENGINEERING PLANS. THE DESIGN PROFESSIONAL MUST RECOGNIZE THAT NO DESIGN DETAIL CAN SUBSTITUTE FOR EXPERIENCED ENGINEERING AND PROFESSIONAL JUDGEMENT.

TITLE:

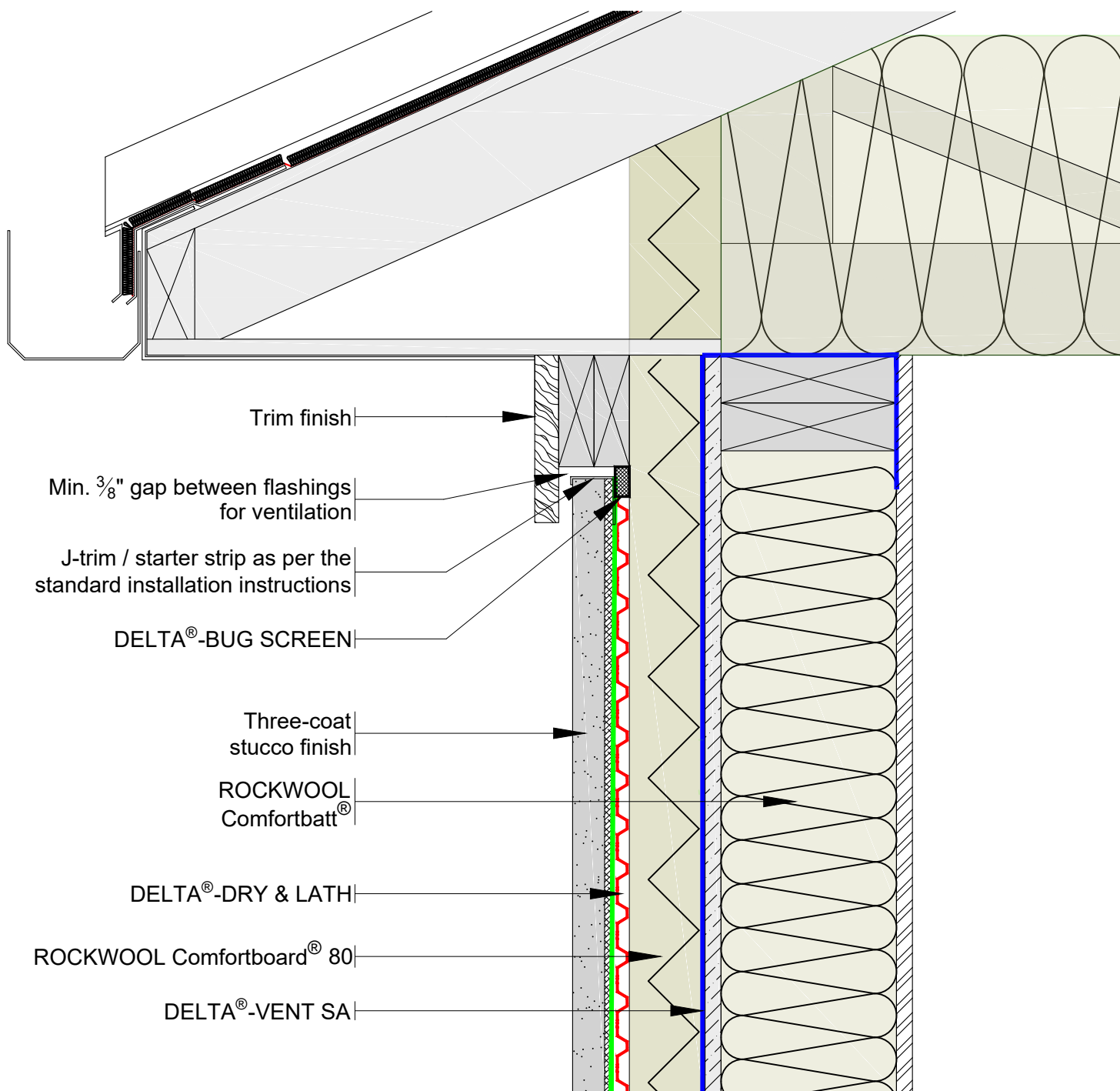
DELTA®-DRY & LATH WITH EXTERIOR INSULATION TYPICAL WINDOW HEAD DETAIL

DRAWN BY: Krzysztof Apriasz C. Tech. CPHC®

DÖRKEN

DELTA®

4655 DELTA WAY BEAMSVILLE, ON. L0R 1B4 CANADA
1-888-433-5824 or 1-905-563-3255



Trim finish

Min. $\frac{3}{8}$ " gap between flashings for ventilation

J-trim / starter strip as per the standard installation instructions

DELTA®-BUG SCREEN

Three-coat stucco finish

ROCKWOOL Comfortbatt®

DELTA®-DRY & LATH

ROCKWOOL Comfortboard® 80

DELTA®-VENT SA

For proper performance of DELTA®-DRY ensure top and bottom remain open to allow ventilation and drainage

SUBSTANTIAL EFFORT HAS BEEN MADE TO ENSURE THAT THE INFORMATION IN THIS DETAIL DRAWING IS ACCURATE. DÖRKEN SYSTEMS INC. CANNOT ACCEPT RESPONSIBILITY FOR ANY ERRORS OR OVERSIGHTS IN THE USE OF THIS MATERIAL OR IN THE PREPARATION OF ARCHITECTURAL OR ENGINEERING PLANS. THE DESIGN PROFESSIONAL MUST RECOGNIZE THAT NO DESIGN DETAIL CAN SUBSTITUTE FOR EXPERIENCED ENGINEERING AND PROFESSIONAL JUDGEMENT.

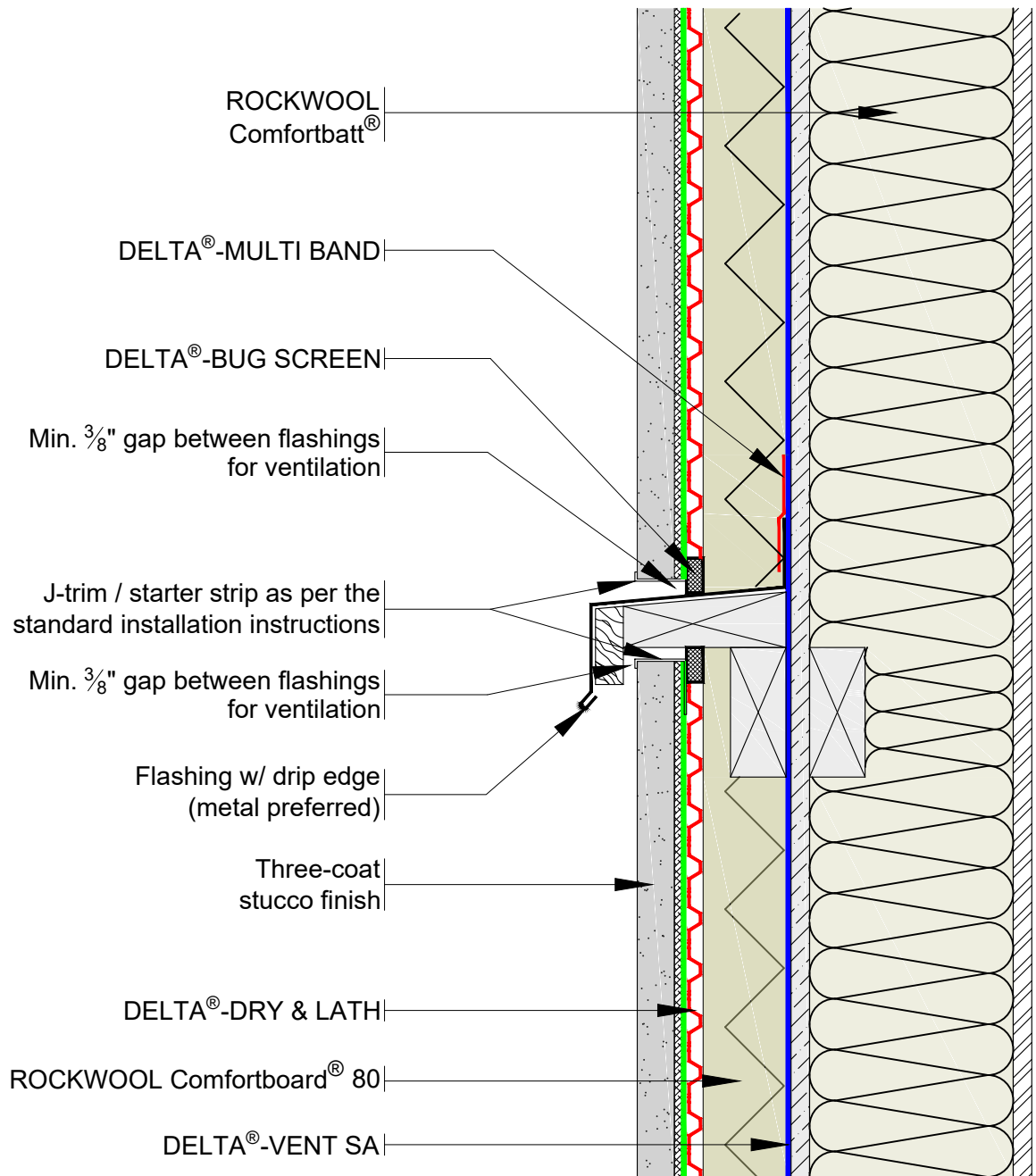
TITLE:

DELTA®-DRY & LATH WITH EXTERIOR INSULATION TOP OF WALL DETAIL

DRAWN BY: Krzysztof Apriasz C. Tech. CPHC®



4655 DELTA WAY BEAMSVILLE, ON. L0R 1B4 CANADA
1-888-433-5824 or 1-905-563-3255



For proper performance of DELTA®-DRY ensure top and bottom remain open to allow ventilation and drainage

SUBSTANTIAL EFFORT HAS BEEN MADE TO ENSURE THAT THE INFORMATION IN THIS DETAIL DRAWING IS ACCURATE. DÖRKEN SYSTEMS INC. CANNOT ACCEPT RESPONSIBILITY FOR ANY ERRORS OR OVERSIGHTS IN THE USE OF THIS MATERIAL OR IN THE PREPARATION OF ARCHITECTURAL OR ENGINEERING PLANS. THE DESIGN PROFESSIONAL MUST RECOGNIZE THAT NO DESIGN DETAIL CAN SUBSTITUTE FOR EXPERIENCED ENGINEERING AND PROFESSIONAL JUDGEMENT.

TITLE:

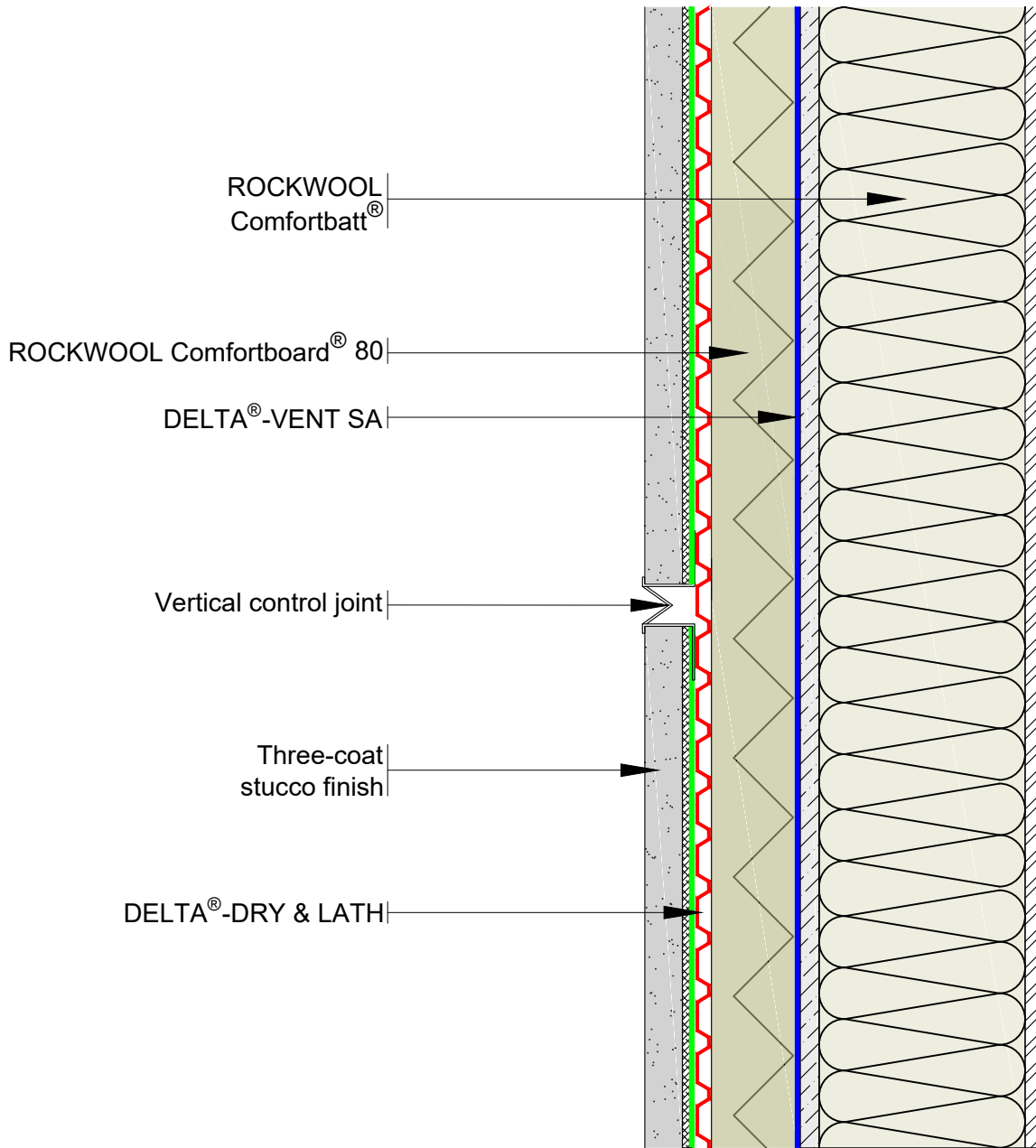
DELTA®-DRY & LATH WITH EXTERIOR INSULATION TYPICAL TRANSITION DETAIL

DRAWN BY: Krzysztof Apriasz C. Tech. CPHC®

DÖRKEN

DELTA®

4655 DELTA WAY BEAMSVILLE, ON. L0R 1B4 CANADA
1-888-433-5824 or 1-905-563-3255



For proper performance of DELTA®-DRY ensure top and bottom remain open to allow ventilation and drainage

SUBSTANTIAL EFFORT HAS BEEN MADE TO ENSURE THAT THE INFORMATION IN THIS DETAIL DRAWING IS ACCURATE. DÖRKEN SYSTEMS INC. CANNOT ACCEPT RESPONSIBILITY FOR ANY ERRORS OR OVERSIGHTS IN THE USE OF THIS MATERIAL OR IN THE PREPARATION OF ARCHITECTURAL OR ENGINEERING PLANS. THE DESIGN PROFESSIONAL MUST RECOGNIZE THAT NO DESIGN DETAIL CAN SUBSTITUTE FOR EXPERIENCED ENGINEERING AND PROFESSIONAL JUDGEMENT.

TITLE:

DELTA®-DRY & LATH WITH
EXTERIOR INSULATION
TYPICAL VERTICAL
CONTROL JOINT

DRAWN BY: Krzysztof Apriasz C. Tech. CPHC®

 **DÖRKEN**

DELTA®

4655 DELTA WAY BEAMSVILLE, ON. L0R 1B4 CANADA
1-888-433-5824 or 1-905-563-3255