

DELTA®-DRY & LATH meets Acceptance Criteria for Moisture Drainage Systems Used with Exterior Cement Plaster or Adhered Veneer Walls (AC356) and Acceptance Criteria for Glass Fiber Lath in Cementitious Exterior Wall Coating or Exterior Cement Plaster (Stucco) (AC275). [IAPMO UES ER-323](#).

\*\*For proper performance of DELTA®-DRY ensure top and bottom remain open to allow ventilation and drainage\*\*

SUBSTANTIAL EFFORT HAS BEEN MADE TO ENSURE THAT THE INFORMATION IN THIS DETAIL DRAWING IS ACCURATE. DÖRKEN SYSTEMS INC. CANNOT ACCEPT RESPONSIBILITY FOR ANY ERRORS OR OVERSIGHTS IN THE USE OF THIS MATERIAL OR IN THE PREPARATION OF ARCHITECTURAL OR ENGINEERING PLANS. THE DESIGN PROFESSIONAL MUST RECOGNIZE THAT NO DESIGN DETAIL CAN SUBSTITUTE FOR EXPERIENCED ENGINEERING AND PROFESSIONAL JUDGEMENT.

TITLE:

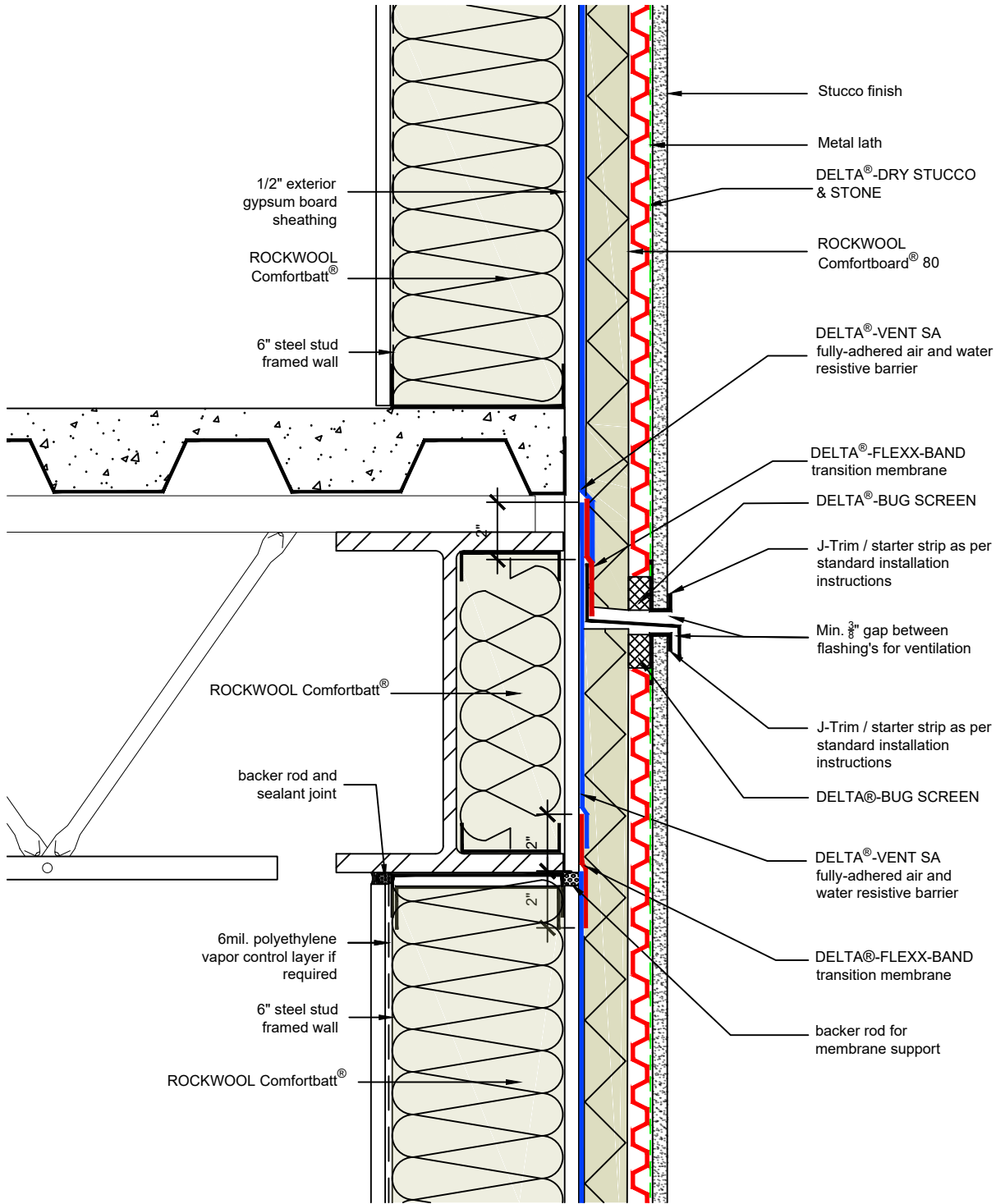
DELTA®-DRY STUCCO & STONE  
WITH EXTERIOR INSULATION  
TYPICAL BASE OF WALL AT  
FOUNDATION

DRAWN BY: DÖRKEN SYSTEMS INC.  
KRZYSZTOF APRIASZ C. Tech. CPHC®

 DÖRKEN

**DELTA®**

4655 DELTA WAY BEAMSVILLE, ON.  
L3J 0T4 CANADA



SUBSTANTIAL EFFORT HAS BEEN MADE TO ENSURE THAT THE INFORMATION IN THIS DETAIL DRAWING IS ACCURATE. DÖRKEN SYSTEMS INC. CANNOT ACCEPT RESPONSIBILITY FOR ANY ERRORS OR OVERSIGHTS IN THE USE OF THIS MATERIAL OR IN THE PREPARATION OF ARCHITECTURAL OR ENGINEERING PLANS. THE DESIGN PROFESSIONAL MUST RECOGNIZE THAT NO DESIGN DETAIL CAN SUBSTITUTE FOR EXPERIENCED ENGINEERING AND PROFESSIONAL JUDGEMENT.

TITLE:

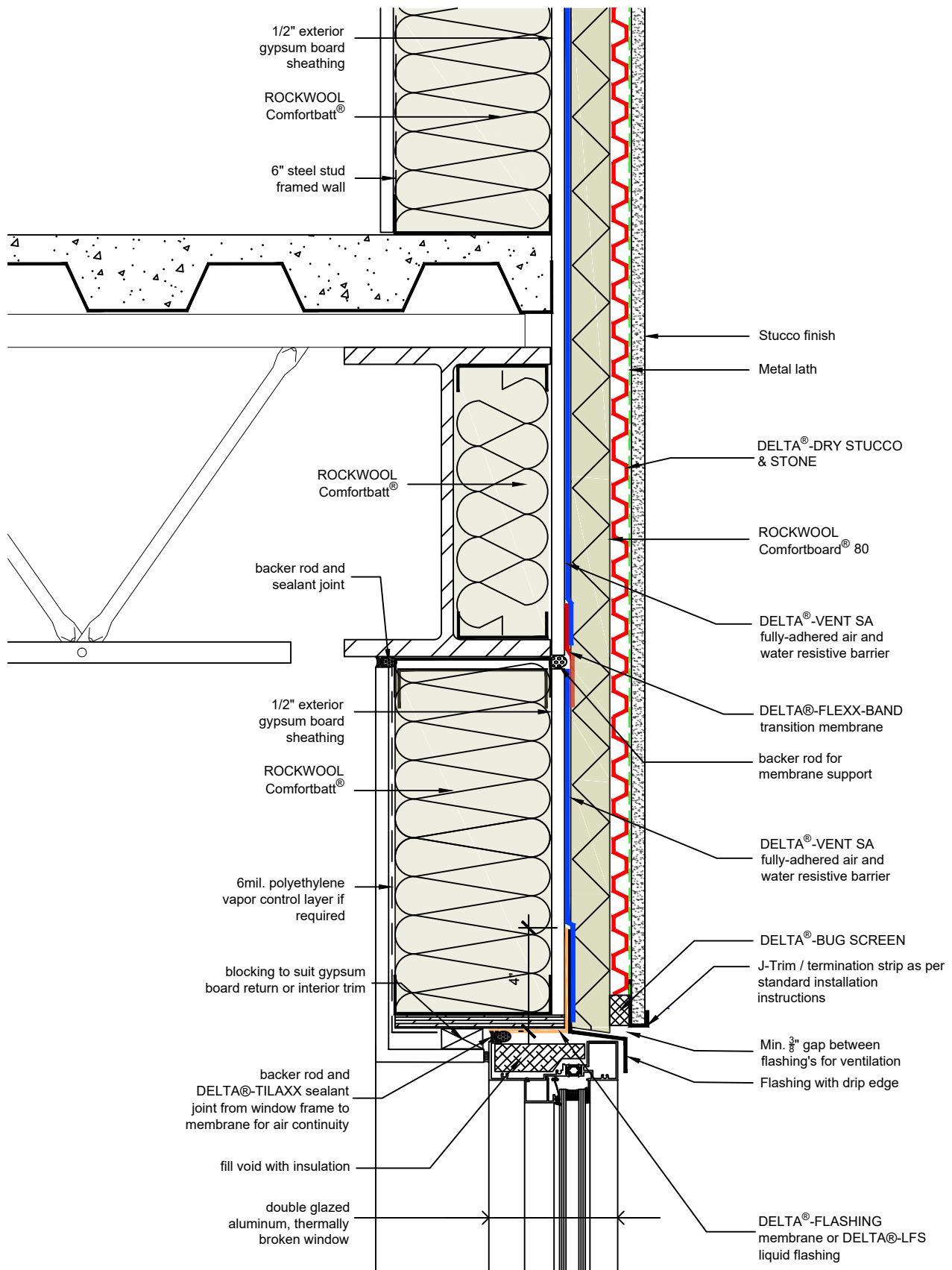
DELTA®-DRY STUCCO & STONE TYPICAL VENTILATION DETAIL

DRAWN BY: DÖRKEN SYSTEMS INC.  
KRZYSZTOF APRIASZ C. Tech. CPHC®



DELTA®

4655 DELTA WAY BEAMSVILLE, ON.  
L3J 0T4 CANADA



SUBSTANTIAL EFFORT HAS BEEN MADE TO ENSURE THAT THE INFORMATION IN THIS DETAIL DRAWING IS ACCURATE. DÖRKEN SYSTEMS INC. CANNOT ACCEPT RESPONSIBILITY FOR ANY ERRORS OR OVERSIGHTS IN THE USE OF THIS MATERIAL OR IN THE PREPARATION OF ARCHITECTURAL OR ENGINEERING PLANS. THE DESIGN PROFESSIONAL MUST RECOGNIZE THAT NO DESIGN DETAIL CAN SUBSTITUTE FOR EXPERIENCED ENGINEERING AND PROFESSIONAL JUDGEMENT.

TITLE:

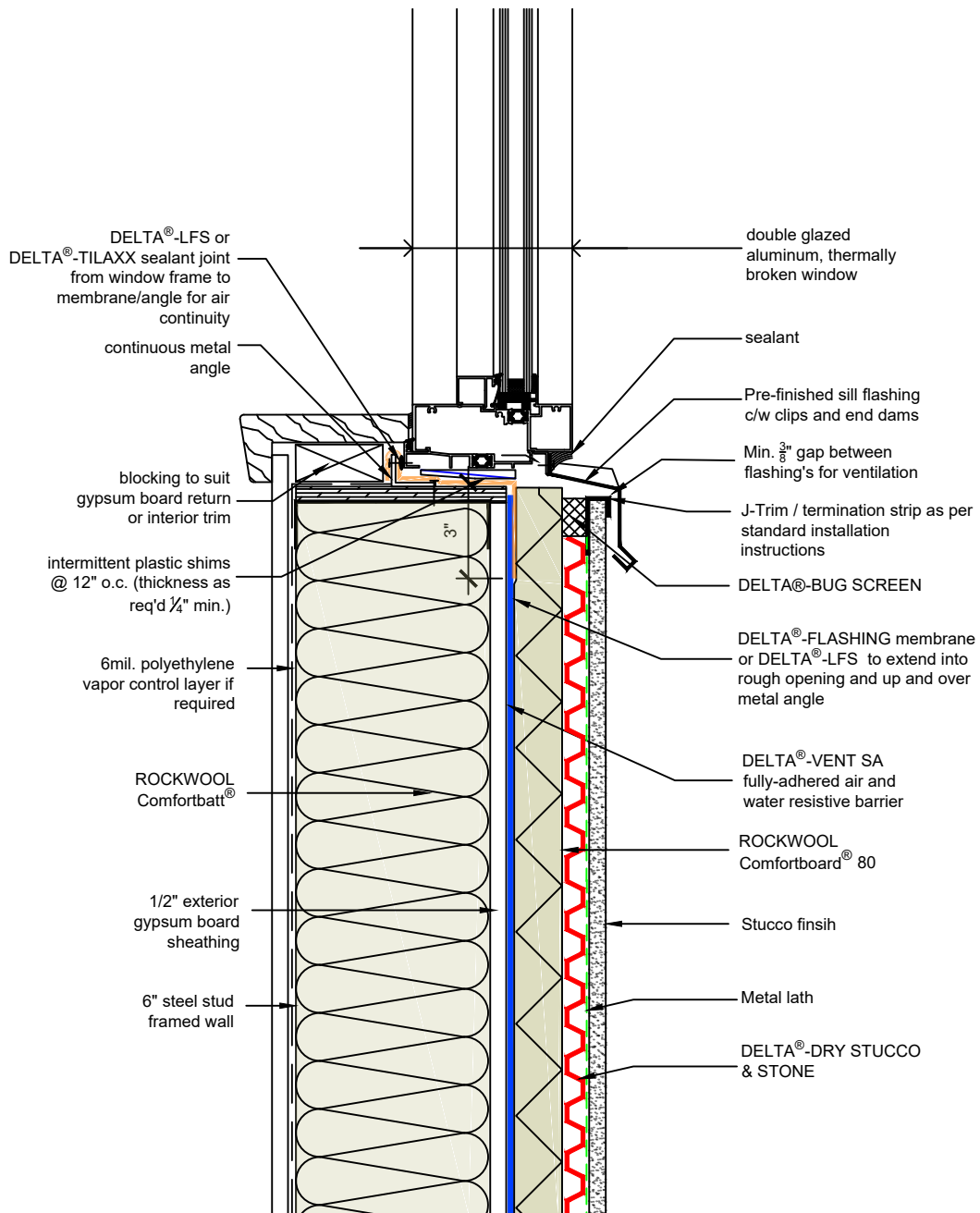
## DELTA®-DRY STUCCO & STONE WITH EXTERIOR INSULATION TYPICAL PUNCHED WINDOW HEAD

DRAWN BY: DÖRKEN SYSTEMS INC.  
KRZYSZTOF APRIASZ C. Tech. CPHC®

 DÖRKEN

**DELTA®**

4655 DELTA WAY BEAMSVILLE, ON.  
L3J 0T4 CANADA



SUBSTANTIAL EFFORT HAS BEEN MADE TO ENSURE THAT THE INFORMATION IN THIS DETAIL DRAWING IS ACCURATE. DÖRKEN SYSTEMS INC. CANNOT ACCEPT RESPONSIBILITY FOR ANY ERRORS OR OVERSIGHTS IN THE USE OF THIS MATERIAL OR IN THE PREPARATION OF ARCHITECTURAL OR ENGINEERING PLANS. THE DESIGN PROFESSIONAL MUST RECOGNIZE THAT NO DESIGN DETAIL CAN SUBSTITUTE FOR EXPERIENCED ENGINEERING AND PROFESSIONAL JUDGEMENT.

TITLE:

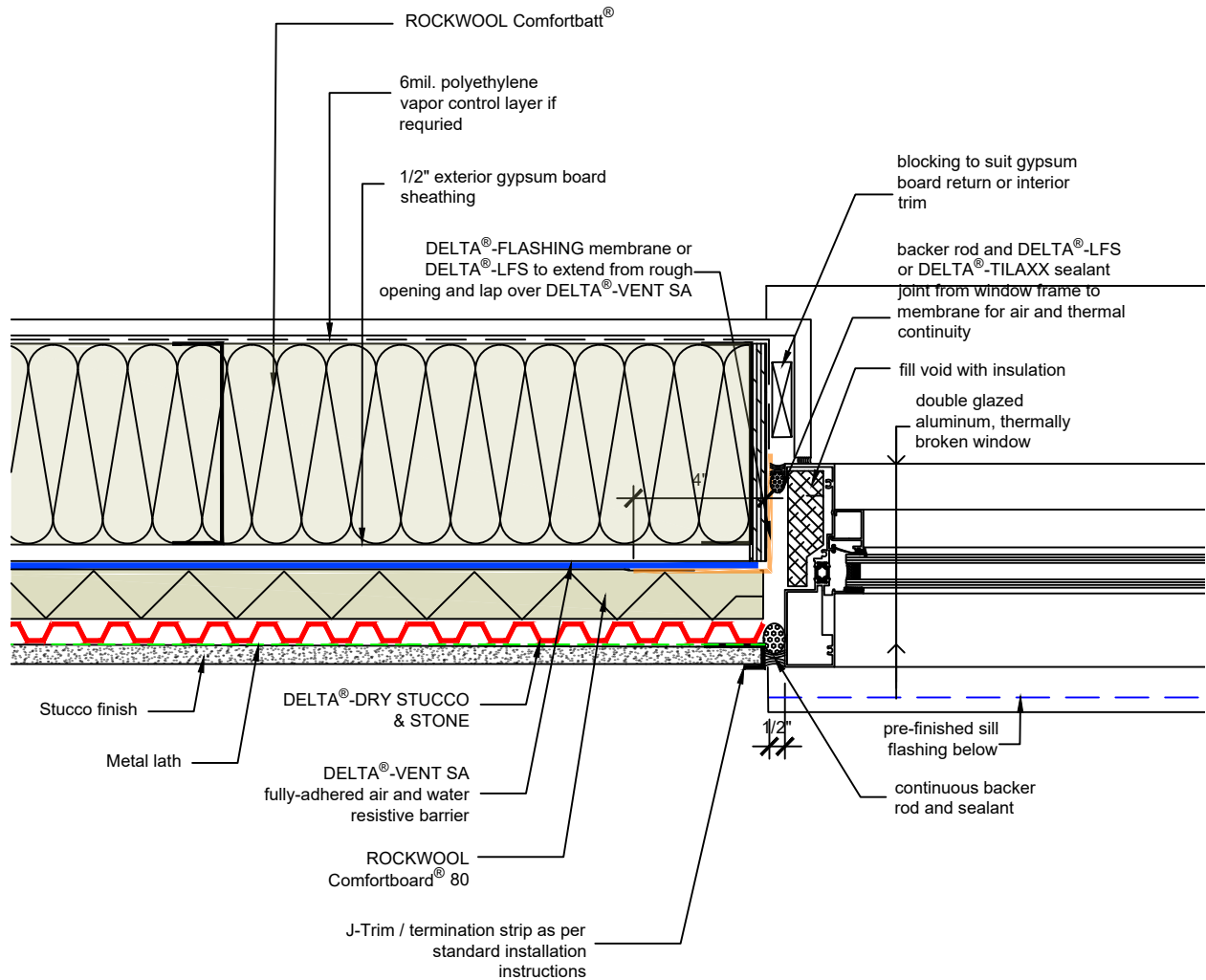
DELTA®-DRY STUCCO & STONE WITH EXTERIOR INSULATION TYPICAL PUNCHED WINDOW JAMB

DRAWN BY: DÖRKEN SYSTEMS INC.  
KRZYSZTOF APRIASZ C. Tech. CPHC®

 DÖRKEN

**DELTA®**

4655 DELTA WAY BEAMSVILLE, ON.  
L3J 0T4 CANADA



SUBSTANTIAL EFFORT HAS BEEN MADE TO ENSURE THAT THE INFORMATION IN THIS DETAIL DRAWING IS ACCURATE. DÖRKEN SYSTEMS INC. CANNOT ACCEPT RESPONSIBILITY FOR ANY ERRORS OR OVERSIGHTS IN THE USE OF THIS MATERIAL OR IN THE PREPARATION OF ARCHITECTURAL OR ENGINEERING PLANS. THE DESIGN PROFESSIONAL MUST RECOGNIZE THAT NO DESIGN DETAIL CAN SUBSTITUTE FOR EXPERIENCED ENGINEERING AND PROFESSIONAL JUDGEMENT.

TITLE:

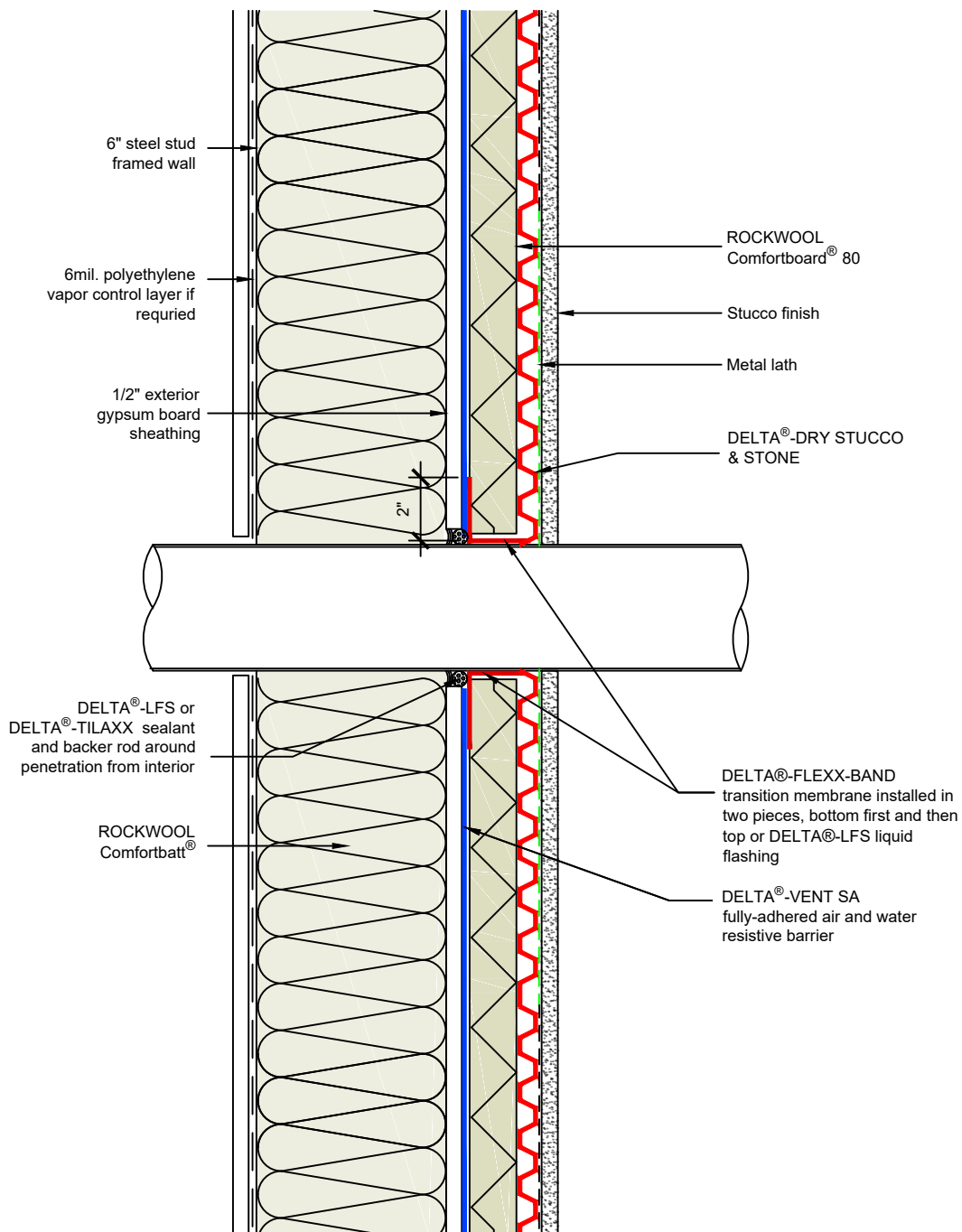
DELTA®-DRY STUCCO & STONE WITH EXTERIOR INSULATION TYPICAL PUNCHED WINDOW JAMB

DRAWN BY: DÖRKEN SYSTEMS INC.  
 KRZYSZTOF APRIASZ C. Tech. CPHC®

 **DÖRKEN**

**DELTA®**

4655 DELTA WAY BEAMSVILLE, ON.  
 L3J 0T4 CANADA



SUBSTANTIAL EFFORT HAS BEEN MADE TO ENSURE THAT THE INFORMATION IN THIS DETAIL DRAWING IS ACCURATE. DÖRKEN SYSTEMS INC. CANNOT ACCEPT RESPONSIBILITY FOR ANY ERRORS OR OVERSIGHTS IN THE USE OF THIS MATERIAL OR IN THE PREPARATION OF ARCHITECTURAL OR ENGINEERING PLANS. THE DESIGN PROFESSIONAL MUST RECOGNIZE THAT NO DESIGN DETAIL CAN SUBSTITUTE FOR EXPERIENCED ENGINEERING AND PROFESSIONAL JUDGEMENT.

TITLE:

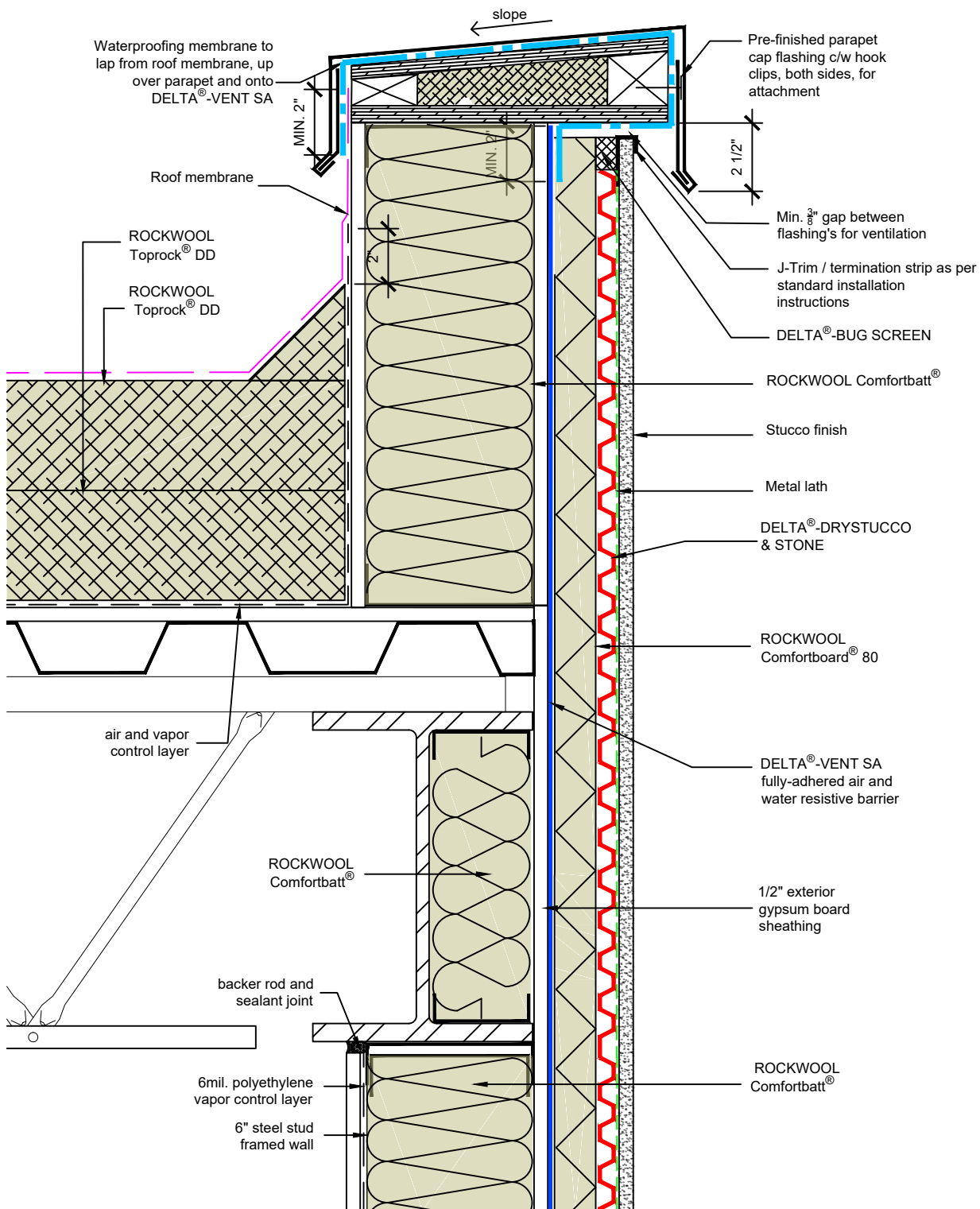
DELTA®-DRY STUCCO & STONE  
WITH EXTERIOR INSULATION  
TYPICAL PENETRATION

DRAWN BY: DÖRKEN SYSTEMS INC.  
KRZYSZTOF APRIASZ C. Tech. CPHC®

 DÖRKEN

**DELTA®**

4655 DELTA WAY BEAMSVILLE, ON.  
L3J 0T4 CANADA



SUBSTANTIAL EFFORT HAS BEEN MADE TO ENSURE THAT THE INFORMATION IN THIS DETAIL DRAWING IS ACCURATE. DÖRKEN SYSTEMS INC. CANNOT ACCEPT RESPONSIBILITY FOR ANY ERRORS OR OVERSIGHTS IN THE USE OF THIS MATERIAL OR IN THE PREPARATION OF ARCHITECTURAL OR ENGINEERING PLANS. THE DESIGN PROFESSIONAL MUST RECOGNIZE THAT NO DESIGN DETAIL CAN SUBSTITUTE FOR EXPERIENCED ENGINEERING AND PROFESSIONAL JUDGEMENT.

TITLE:

**DELTA®-DRY STUCCO & STONE WITH EXTERIOR INSULATION TYPICAL ROOF TO WALL SECTION**

DRAWN BY: DÖRKEN SYSTEMS INC.  
KRZYSZTOF APRIASZ C. Tech. CPHC®



**DELTA®**

4655 DELTA WAY BEAMSVILLE, ON.  
L3J 0T4 CANADA