

Wall Assembly 8 - Steel Frame with Light Cladding

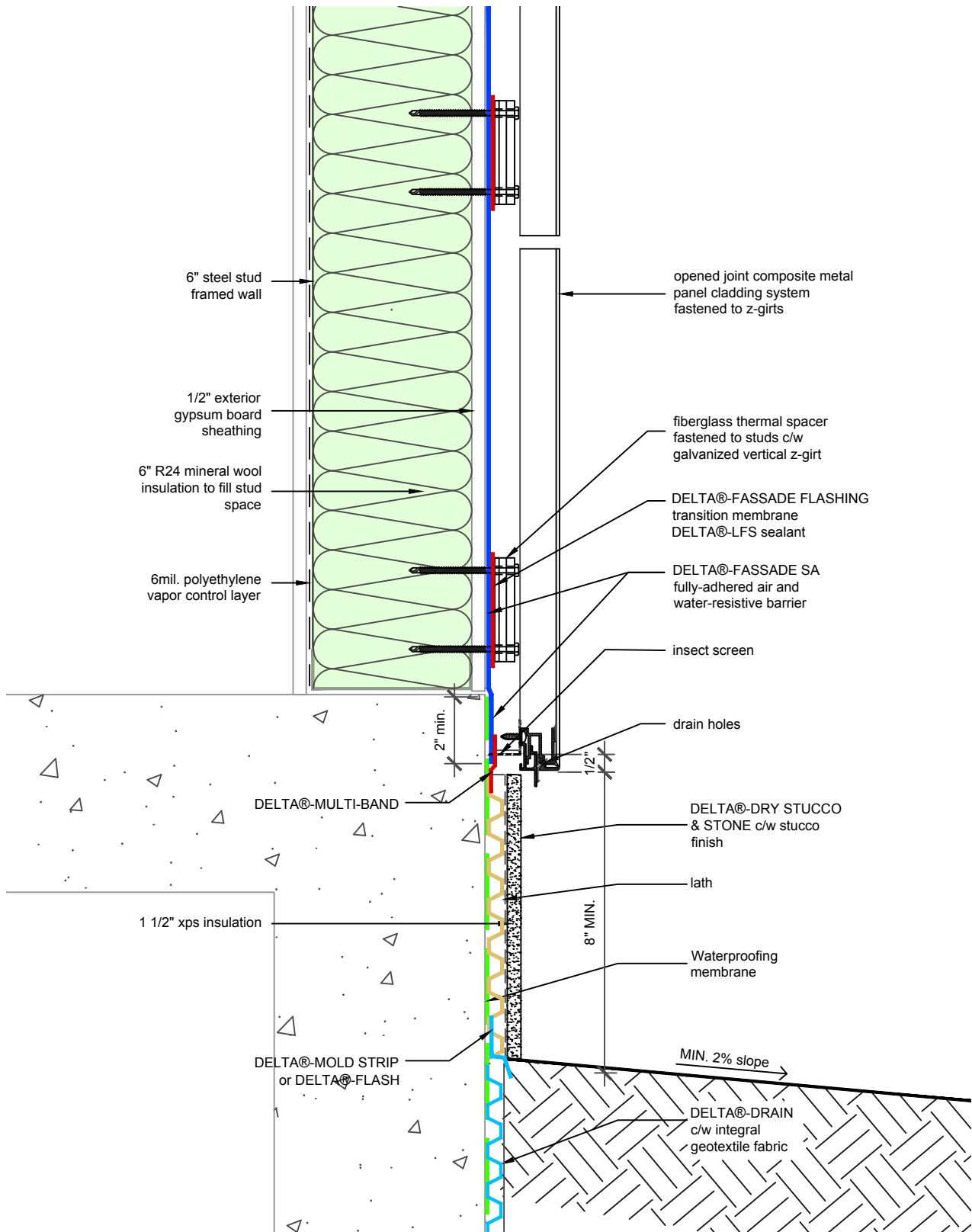
P R E M I U M Q U A L I T Y

Dörken Systems Inc. 4655 Delta Way Beamsville, Ontario L3J 0T6

1-888-4 DELTA 4, (905) 563-3255 Fax: (905) 563-5582

info@dorken.com, www.dorken.com

A **DÖRKEN**GROUP company



SUBSTANTIAL EFFORT HAS BEEN MADE TO ENSURE THAT THE INFORMATION IN THIS DETAIL DRAWING IS ACCURATE. DÖRKEN SYSTEMS INC. CANNOT ACCEPT RESPONSIBILITY FOR ANY ERRORS OR OVERSIGHTS IN THE USE OF THIS MATERIAL OR IN THE PREPARATION OF ARCHITECTURAL OR ENGINEERING PLANS. THE DESIGN PROFESSIONAL MUST RECOGNIZE THAT NO DESIGN DETAIL CAN SUBSTITUTE FOR EXPERIENCED ENGINEERING AND PROFESSIONAL JUDGEMENT.

TITLE:

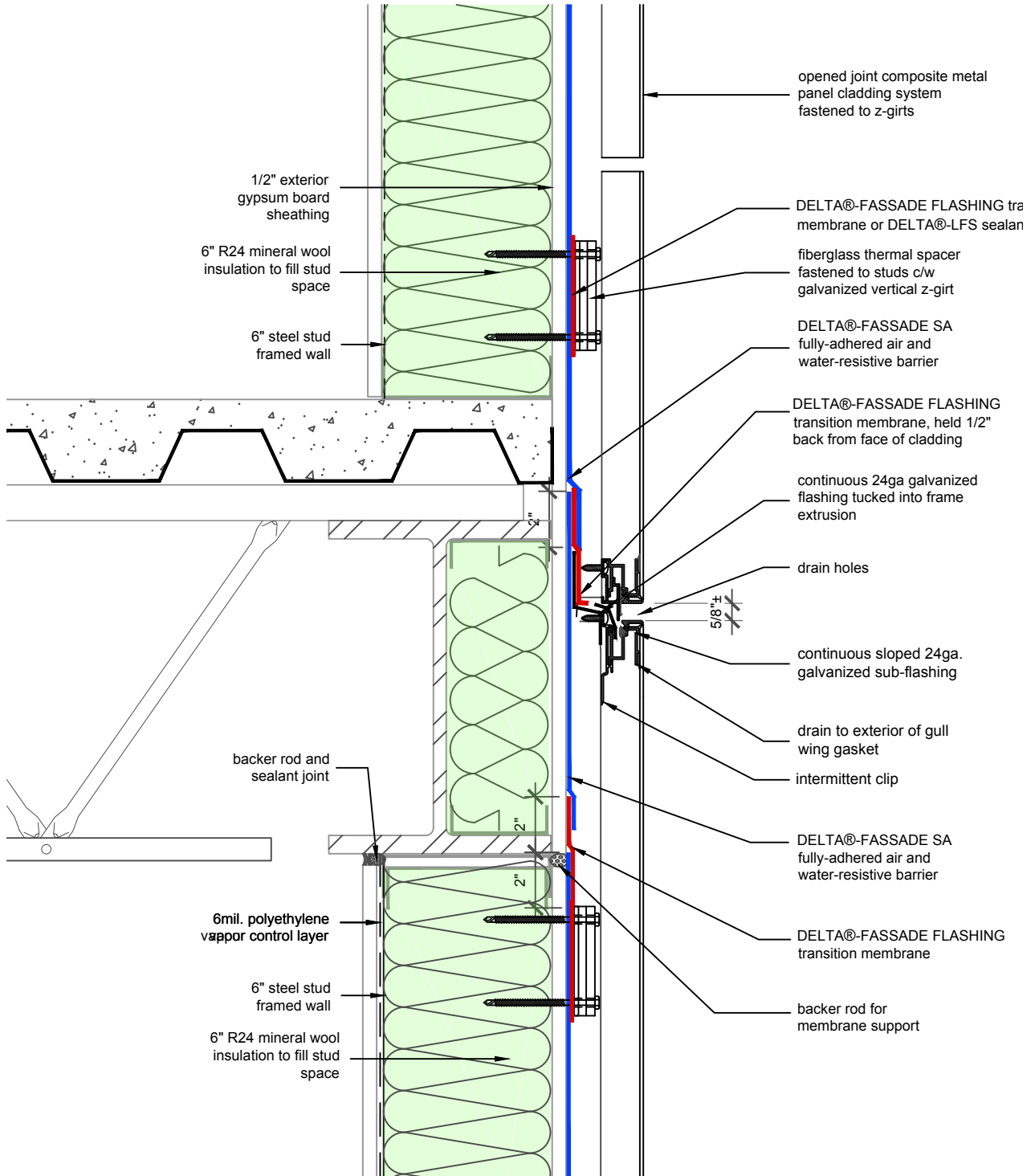
**WALL ASSEMBLY #8:
TYPICAL BASE OF WALL AT
FOUDATION**

DRAWN BY: DÖRKEN SYSTEMS INC.



DELTA®

4655 DELTA WAY BEAMSVILLE, ON.
L3J 0T6 CANADA



SUBSTANTIAL EFFORT HAS BEEN MADE TO ENSURE THAT THE INFORMATION IN THIS DETAIL DRAWING IS ACCURATE. DÖRKEN SYSTEMS INC. CANNOT ACCEPT RESPONSIBILITY FOR ANY ERRORS OR OVERSIGHTS IN THE USE OF THIS MATERIAL OR IN THE PREPARATION OF ARCHITECTURAL OR ENGINEERING PLANS. THE DESIGN PROFESSIONAL MUST RECOGNIZE THAT NO DESIGN DETAIL CAN SUBSTITUTE FOR EXPERIENCED ENGINEERING AND PROFESSIONAL JUDGEMENT.

TITLE:

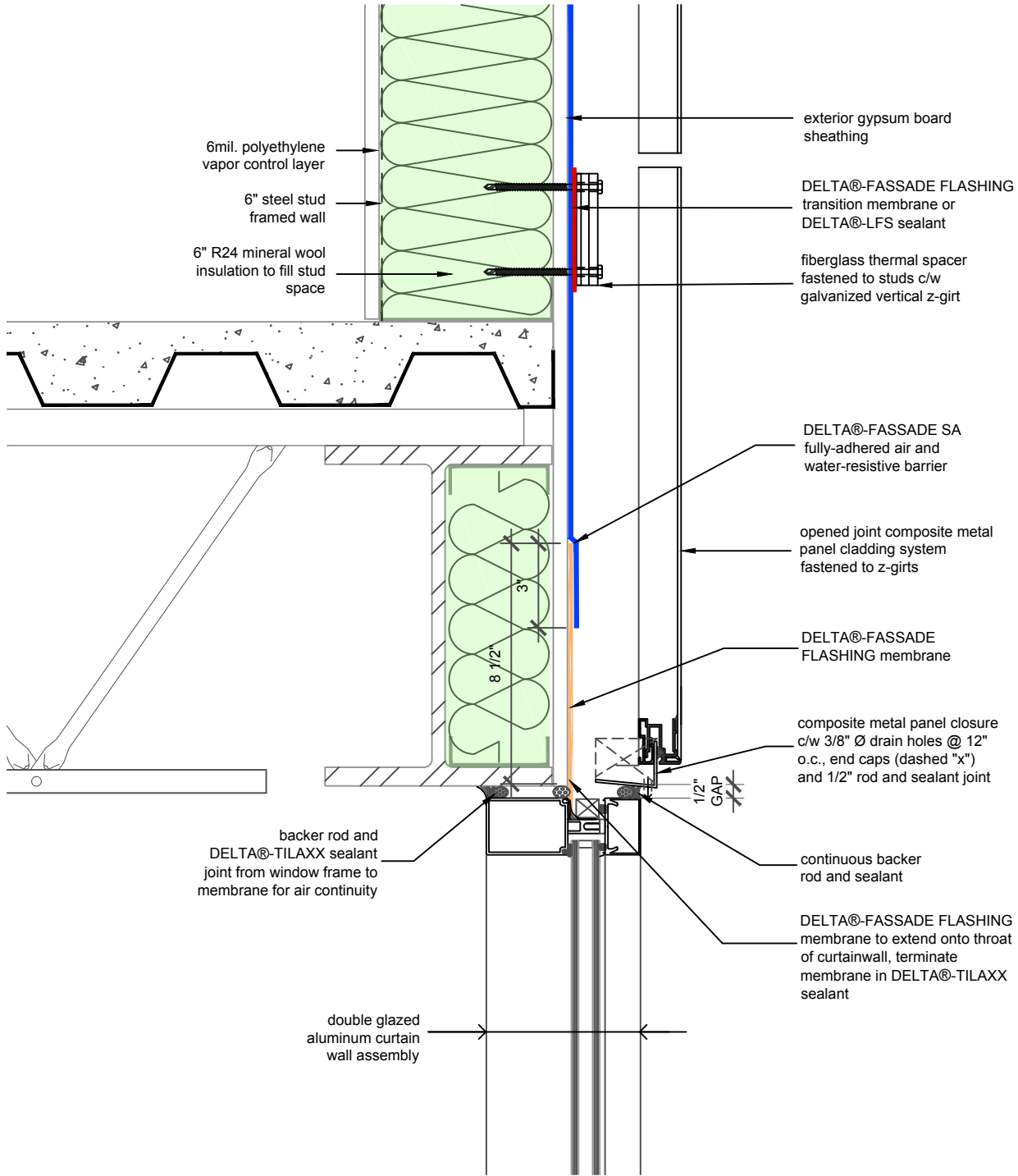
WALL ASSEMBLY #8: TYPICAL ATTACHMENT AT FLOOR

DRAWN BY: DÖRKEN SYSTEMS INC.

 **DÖRKEN**

DELTA®

4655 DELTA WAY BEAMSVILLE, ON.
L3J 0T6 CANADA



SUBSTANTIAL EFFORT HAS BEEN MADE TO ENSURE THAT THE INFORMATION IN THIS DETAIL DRAWING IS ACCURATE. DÖRKEN SYSTEMS INC. CANNOT ACCEPT RESPONSIBILITY FOR ANY ERRORS OR OVERSIGHTS IN THE USE OF THIS MATERIAL OR IN THE PREPARATION OF ARCHITECTURAL OR ENGINEERING PLANS. THE DESIGN PROFESSIONAL MUST RECOGNIZE THAT NO DESIGN DETAIL CAN SUBSTITUTE FOR EXPERIENCED ENGINEERING AND PROFESSIONAL JUDGEMENT.

TITLE:

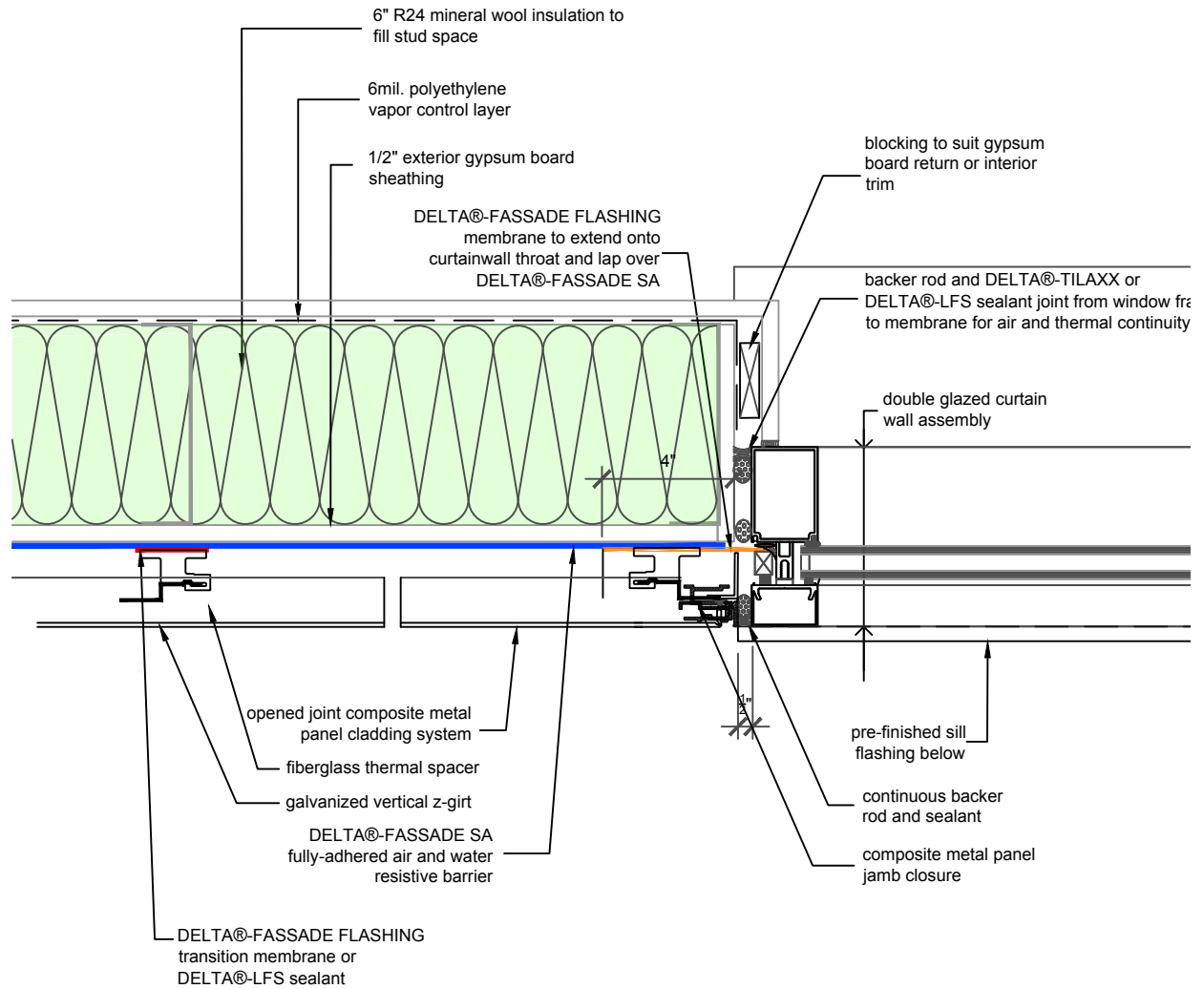
WALL ASSEMBLY #8: TYPICAL CURTAIN WALL HEAD

DRAWN BY: DÖRKEN SYSTEMS INC.



DELTA®

4655 DELTA WAY BEAMSVILLE, ON.
L3J 0T6 CANADA



SUBSTANTIAL EFFORT HAS BEEN MADE TO ENSURE THAT THE INFORMATION IN THIS DETAIL DRAWING IS ACCURATE. DÖRKEN SYSTEMS INC. CANNOT ACCEPT RESPONSIBILITY FOR ANY ERRORS OR OVERSIGHTS IN THE USE OF THIS MATERIAL OR IN THE PREPARATION OF ARCHITECTURAL OR ENGINEERING PLANS. THE DESIGN PROFESSIONAL MUST RECOGNIZE THAT NO DESIGN DETAIL CAN SUBSTITUTE FOR EXPERIENCED ENGINEERING AND PROFESSIONAL JUDGEMENT.

TITLE:

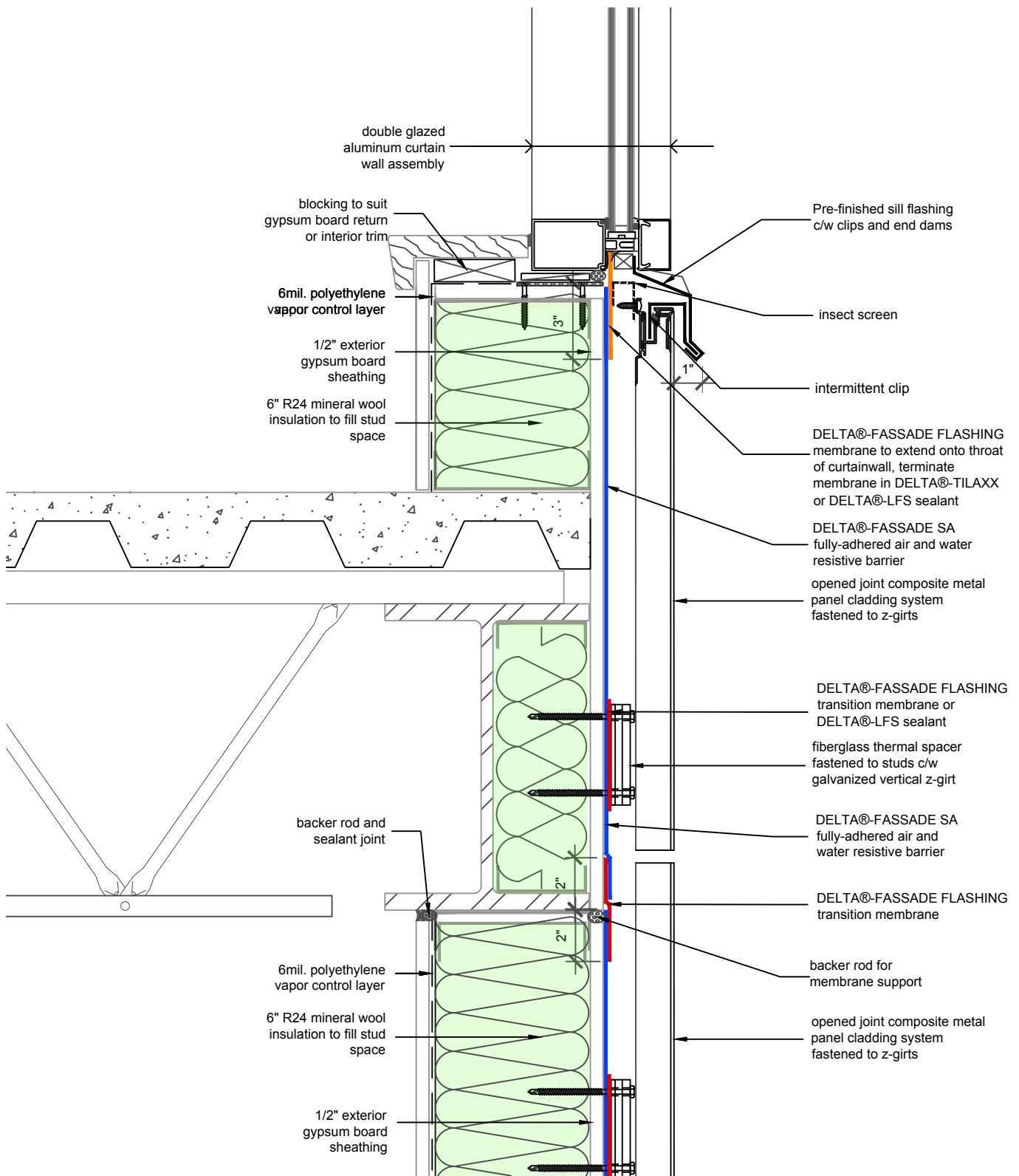
WALL ASSEMBLY #8: TYPICAL CURTAIN WALL JAMB

DRAWN BY: DÖRKEN SYSTEMS INC.

 **DÖRKEN**

DELTA®

4655 DELTA WAY BEAMSVILLE, ON.
L3J 0T6 CANADA



SUBSTANTIAL EFFORT HAS BEEN MADE TO ENSURE THAT THE INFORMATION IN THIS DETAIL DRAWING IS ACCURATE. DÖRKEN SYSTEMS INC. CANNOT ACCEPT RESPONSIBILITY FOR ANY ERRORS OR OVERSIGHTS IN THE USE OF THIS MATERIAL OR IN THE PREPARATION OF ARCHITECTURAL OR ENGINEERING PLANS. THE DESIGN PROFESSIONAL MUST RECOGNIZE THAT NO DESIGN DETAIL CAN SUBSTITUTE FOR EXPERIENCED ENGINEERING AND PROFESSIONAL JUDGEMENT.

TITLE:

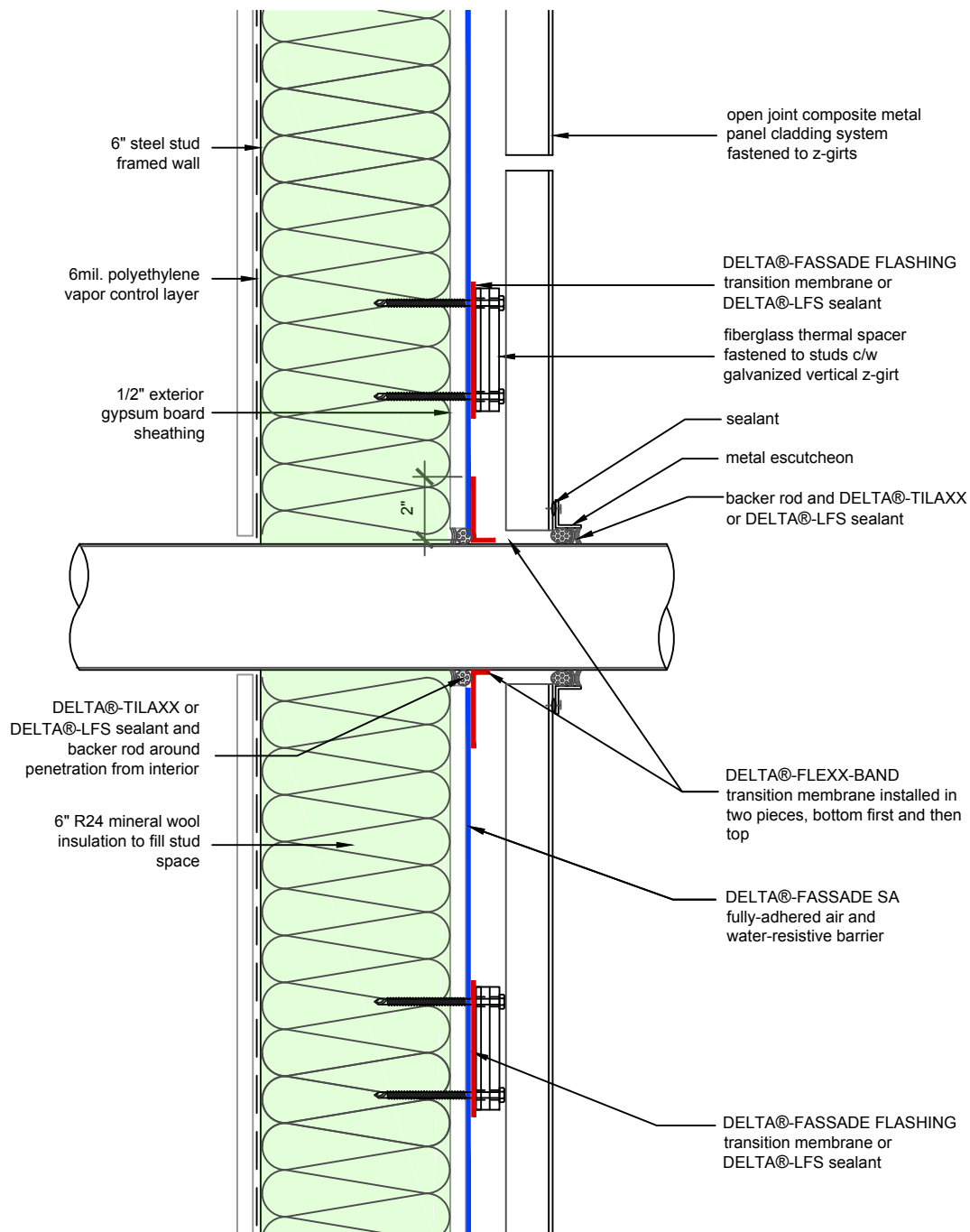
WALL ASSEMBLY #8: TYPICAL CURTAIN WALL SILL

DRAWN BY: DÖRKEN SYSTEMS INC.

 **DÖRKEN**

DELTA®

4655 DELTA WAY BEAMSVILLE, ON.
L3J 0T6 CANADA



SUBSTANTIAL EFFORT HAS BEEN MADE TO ENSURE THAT THE INFORMATION IN THIS DETAIL DRAWING IS ACCURATE. DÖRKEN SYSTEMS INC. CANNOT ACCEPT RESPONSIBILITY FOR ANY ERRORS OR OVERSIGHTS IN THE USE OF THIS MATERIAL OR IN THE PREPARATION OF ARCHITECTURAL OR ENGINEERING PLANS. THE DESIGN PROFESSIONAL MUST RECOGNIZE THAT NO DESIGN DETAIL CAN SUBSTITUTE FOR EXPERIENCED ENGINEERING AND PROFESSIONAL JUDGEMENT.

TITLE:

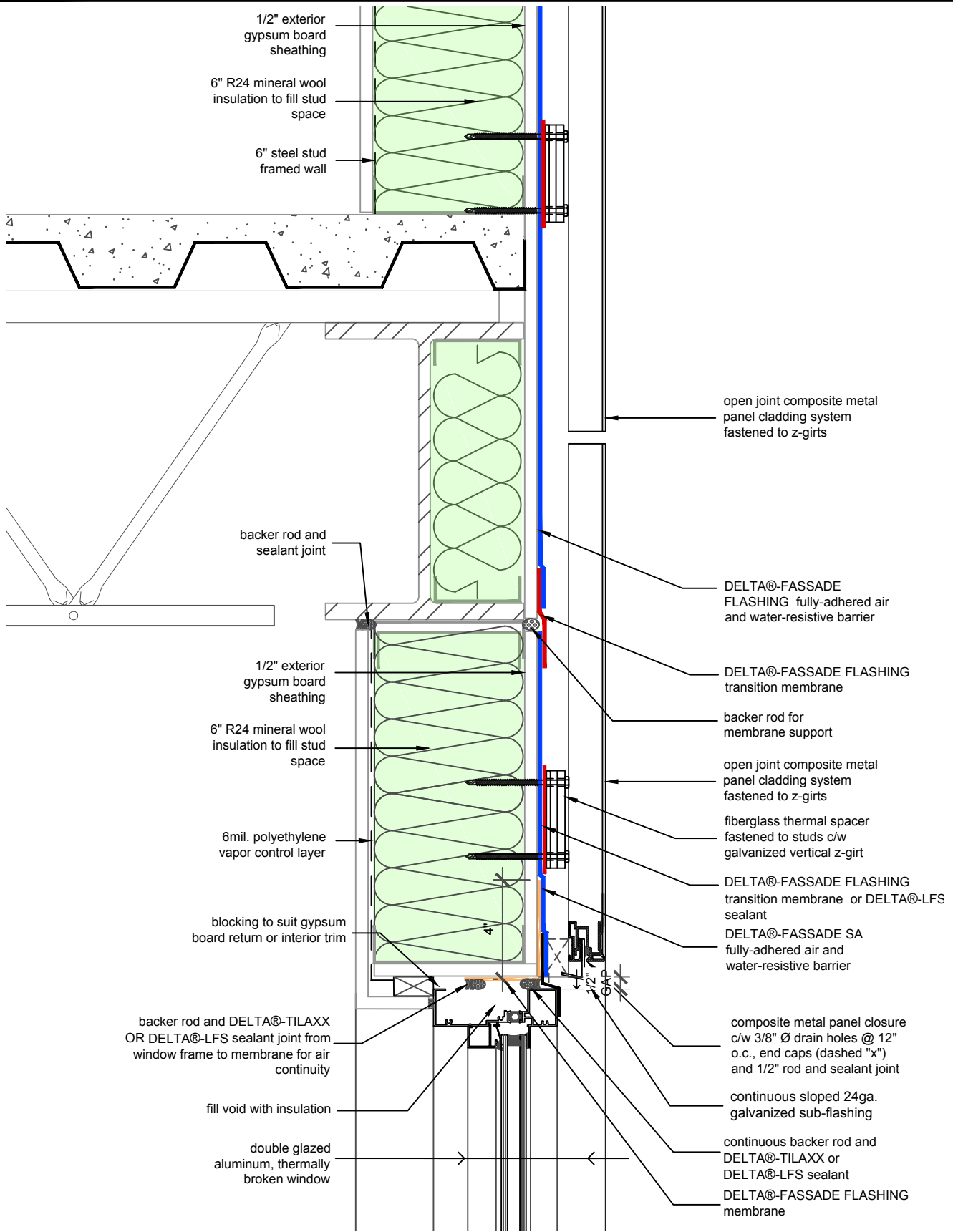
WALL ASSEMBLY #8: TYPICAL PENETRATION

DRAWN BY: DÖRKEN SYSTEMS INC.

 **DÖRKEN**

DELTA®

4655 DELTA WAY BEAMSVILLE, ON.
L3J 0T6 CANADA



SUBSTANTIAL EFFORT HAS BEEN MADE TO ENSURE THAT THE INFORMATION IN THIS DETAIL DRAWING IS ACCURATE. DÖRKEN SYSTEMS INC. CANNOT ACCEPT RESPONSIBILITY FOR ANY ERRORS OR OVERSIGHTS IN THE USE OF THIS MATERIAL OR IN THE PREPARATION OF ARCHITECTURAL OR ENGINEERING PLANS. THE DESIGN PROFESSIONAL MUST RECOGNIZE THAT NO DESIGN DETAIL CAN SUBSTITUTE FOR EXPERIENCED ENGINEERING AND PROFESSIONAL JUDGEMENT.

TITLE:

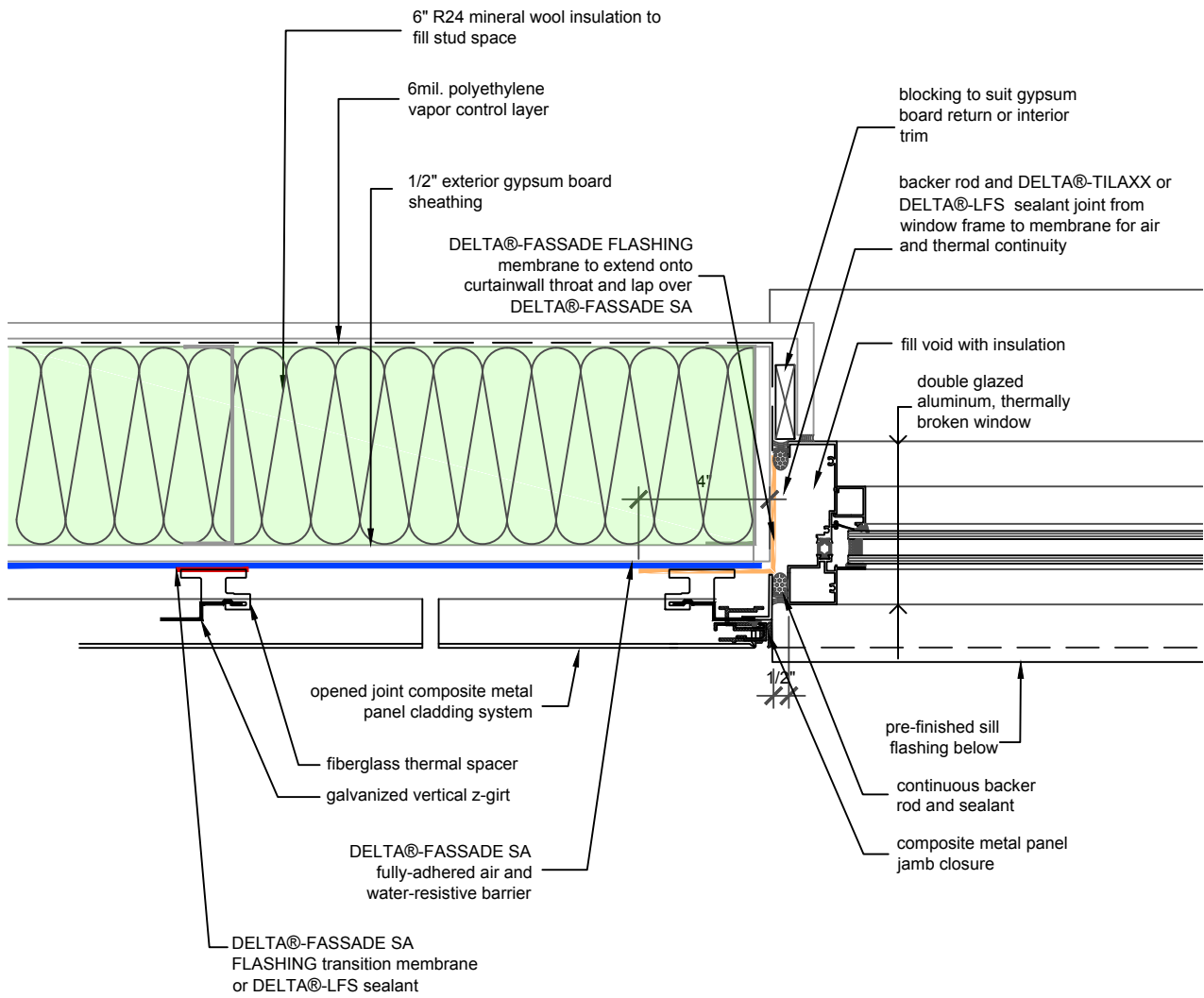
WALL ASSEMBLY #8: TYPICAL WINDOW HEAD

DRAWN BY: DÖRKEN SYSTEMS INC.

 **DÖRKEN**

DELTA®

4655 DELTA WAY BEAMSVILLE, ON.
L3J 0T6 CANADA



SUBSTANTIAL EFFORT HAS BEEN MADE TO ENSURE THAT THE INFORMATION IN THIS DETAIL DRAWING IS ACCURATE. DÖRKEN SYSTEMS INC. CANNOT ACCEPT RESPONSIBILITY FOR ANY ERRORS OR OVERSIGHTS IN THE USE OF THIS MATERIAL OR IN THE PREPARATION OF ARCHITECTURAL OR ENGINEERING PLANS. THE DESIGN PROFESSIONAL MUST RECOGNIZE THAT NO DESIGN DETAIL CAN SUBSTITUTE FOR EXPERIENCED ENGINEERING AND PROFESSIONAL JUDGEMENT.

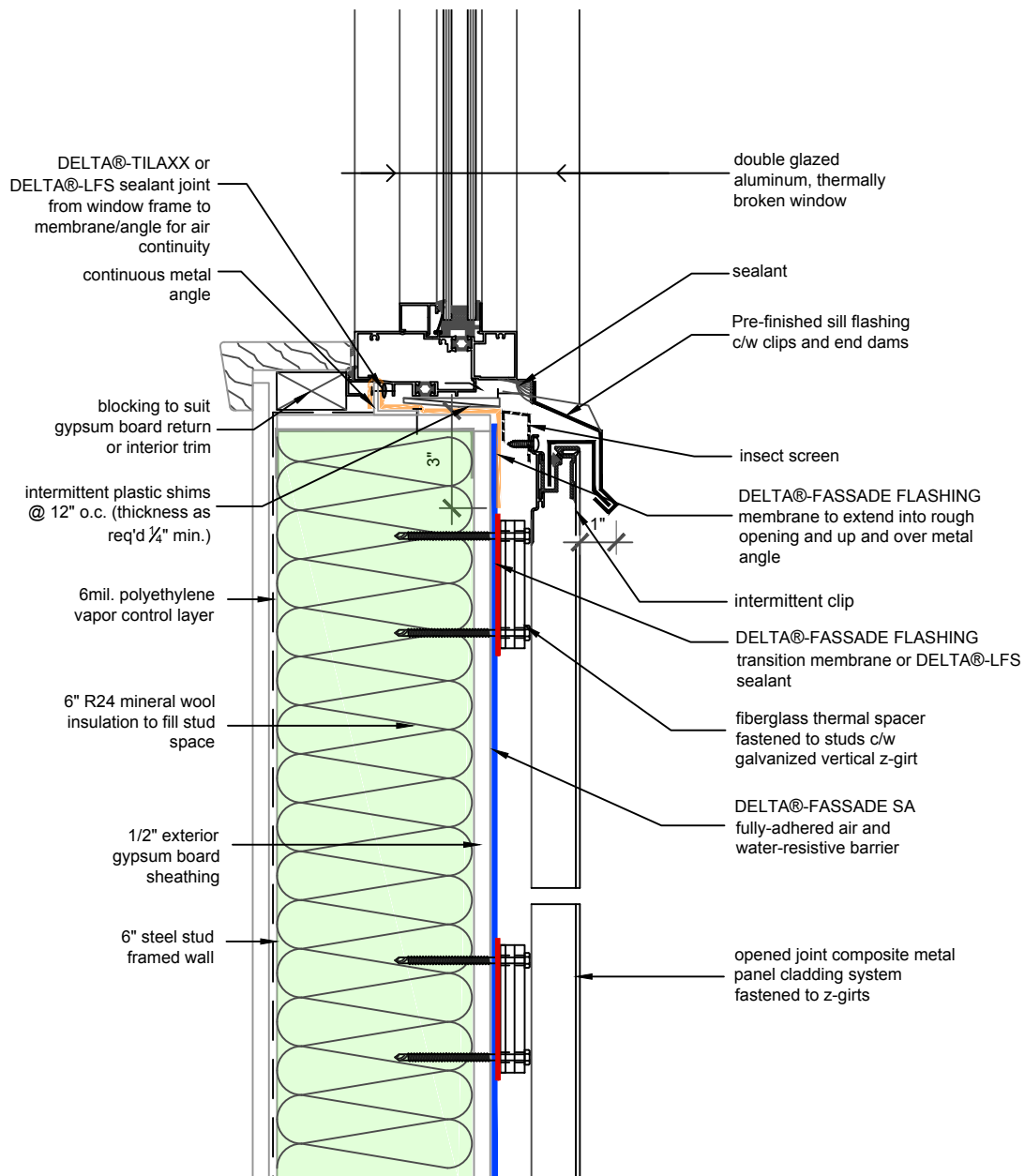
TITLE:
**WALL ASSEMBLY #8:
 TYPICAL WINDOW JAMB**

DRAWN BY: DÖRKEN SYSTEMS INC.

DÖRKEN

DELTA®

4655 DELTA WAY BEAMSVILLE, ON.
 L3J 0T6 CANADA



SUBSTANTIAL EFFORT HAS BEEN MADE TO ENSURE THAT THE INFORMATION IN THIS DETAIL DRAWING IS ACCURATE. DÖRKEN SYSTEMS INC. CANNOT ACCEPT RESPONSIBILITY FOR ANY ERRORS OR OVERSIGHTS IN THE USE OF THIS MATERIAL OR IN THE PREPARATION OF ARCHITECTURAL OR ENGINEERING PLANS. THE DESIGN PROFESSIONAL MUST RECOGNIZE THAT NO DESIGN DETAIL CAN SUBSTITUTE FOR EXPERIENCED ENGINEERING AND PROFESSIONAL JUDGEMENT.

TITLE:

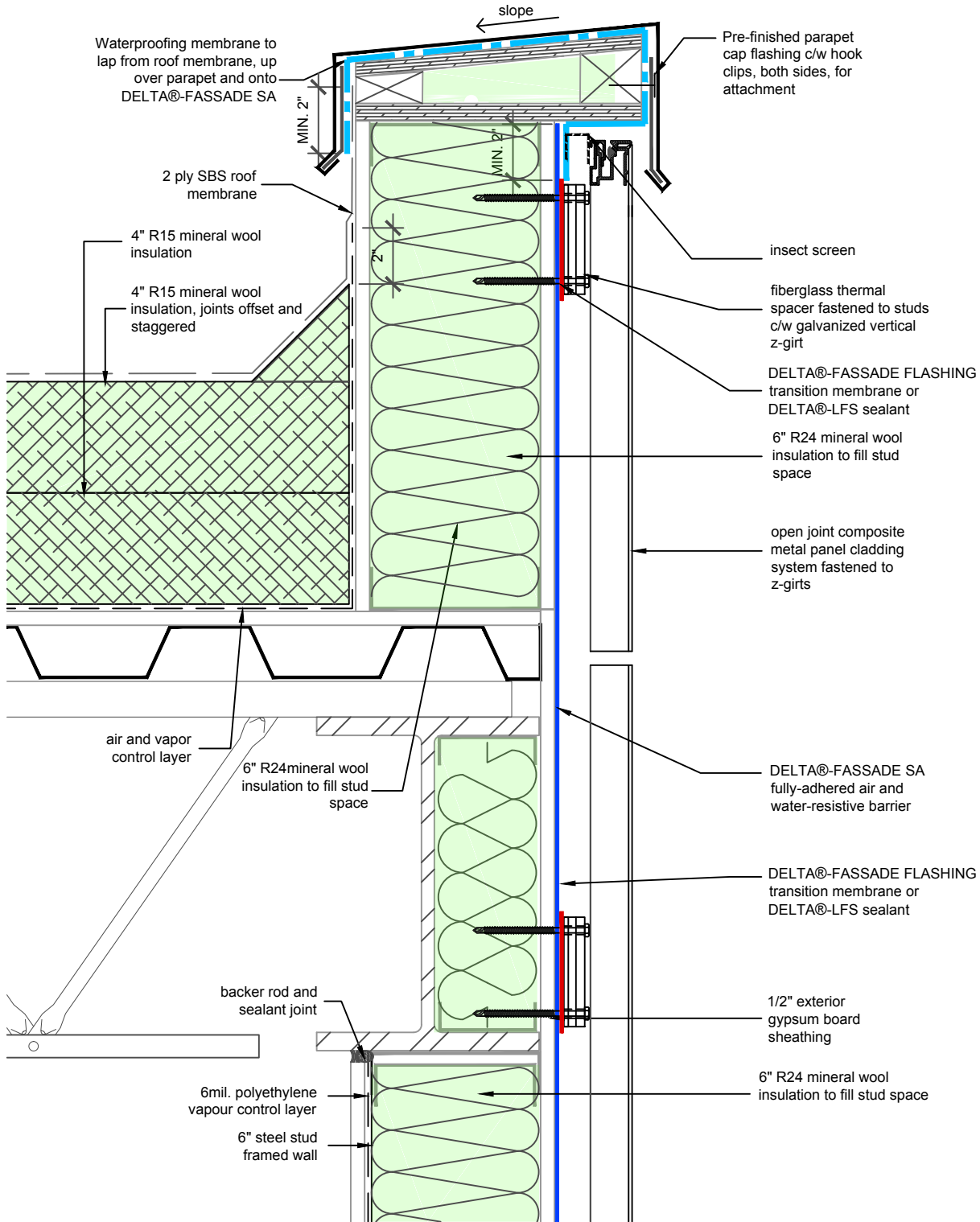
WALL ASSEMBLY #8: TYPICAL WINDOW SILL

DRAWN BY: DÖRKEN SYSTEMS INC.

 DÖRKEN

DELTA®

4655 DELTA WAY BEAMSVILLE, ON.
L3J 0T6 CANADA



SUBSTANTIAL EFFORT HAS BEEN MADE TO ENSURE THAT THE INFORMATION IN THIS DETAIL DRAWING IS ACCURATE. DÖRKEN SYSTEMS INC. CANNOT ACCEPT RESPONSIBILITY FOR ANY ERRORS OR OVERSIGHTS IN THE USE OF THIS MATERIAL OR IN THE PREPARATION OF ARCHITECTURAL OR ENGINEERING PLANS. THE DESIGN PROFESSIONAL MUST RECOGNIZE THAT NO DESIGN DETAIL CAN SUBSTITUTE FOR EXPERIENCED ENGINEERING AND PROFESSIONAL JUDGEMENT.

TITLE:

WALL ASSEMBLY #8: TYPICAL ROOF TO WALL

DRAWN BY: DÖRKEN SYSTEMS INC.

 **DÖRKEN**

DELTA®

4655 DELTA WAY BEAMSVILLE, ON.
L3J 0T6 CANADA