

SUBSTANTIAL EFFORT HAS BEEN MADE TO ENSURE THAT THE INFORMATION IN THIS DETAIL DRAWING IS ACCURATE. DÖRKEN SYSTEMS INC. CANNOT ACCEPT RESPONSIBILITY FOR ANY ERRORS OR OVERSIGHTS IN THE USE OF THIS MATERIAL OR IN THE PREPARATION OF ARCHITECTURAL OR ENGINEERING PLANS. THE DESIGN PROFESSIONAL MUST RECOGNIZE THAT NO DESIGN DETAIL CAN SUBSTITUTE FOR EXPERIENCED ENGINEERING AND PROFESSIONAL JUDGEMENT.

TITLE:

**DELTA®-DRAIN 9000 HI-X EXPANSION  
JOINT COVER DECK TO WALL  
JUNCTION DETAIL**

DRAWN BY: Krzysztof Apiasz C. Tech., CPHC®

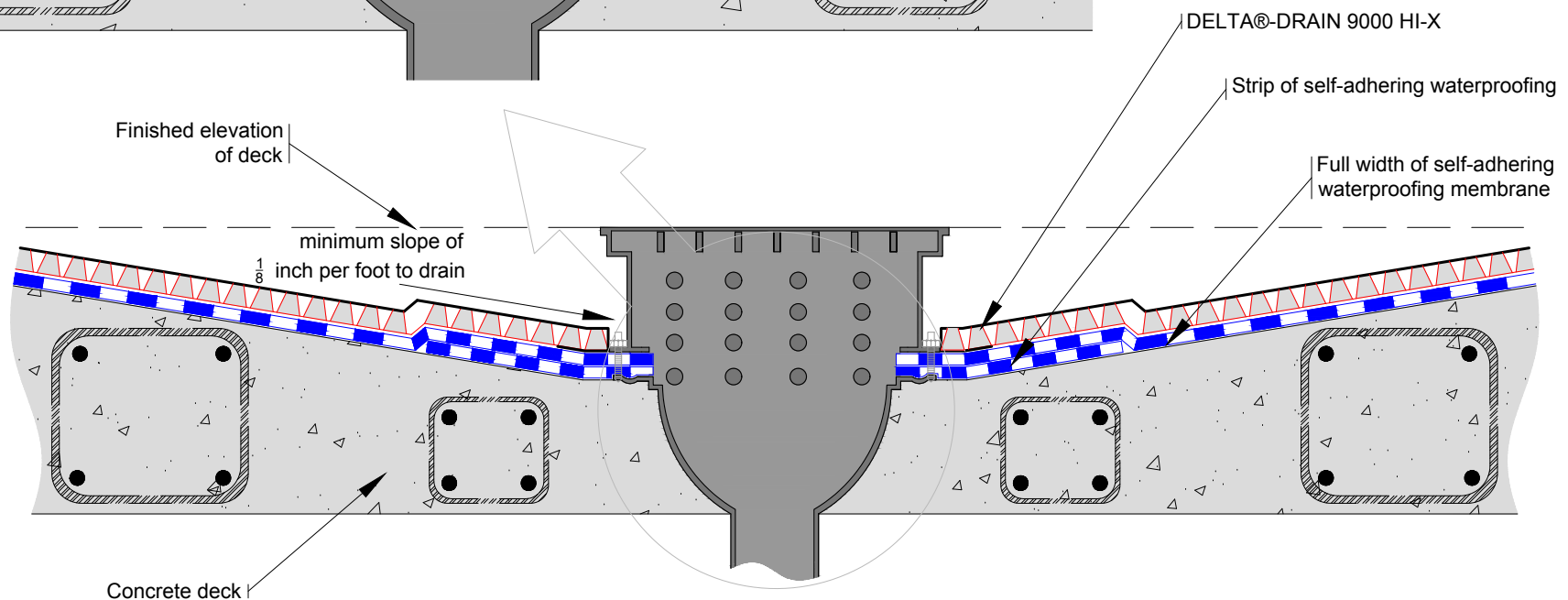
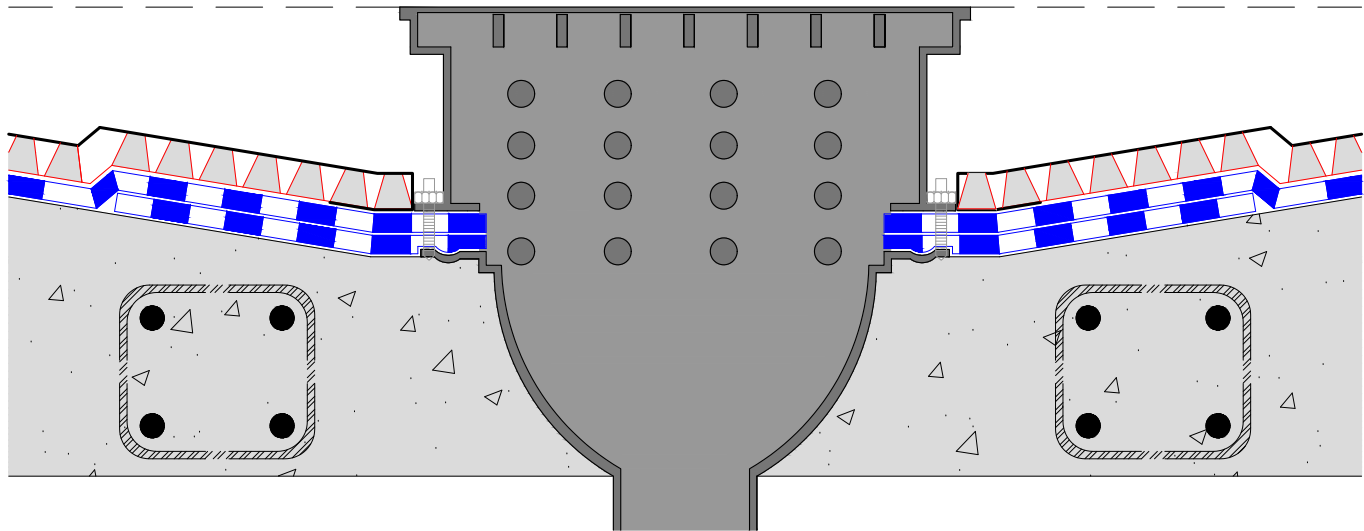
Date: February 18, 2011

File Name: DD9000\_01

**DÖRKEN**

**DELTA®**

4655 DELTA WAY BEAMSVILLE, ON.  
L3J 0T6 CANADA



SUBSTANTIAL EFFORT HAS BEEN MADE TO ENSURE THAT THE INFORMATION IN THIS DETAIL DRAWING IS ACCURATE. DÖRKEN SYSTEMS INC. CANNOT ACCEPT RESPONSIBILITY FOR ANY ERRORS OR OVERSIGHTS IN THE USE OF THIS MATERIAL OR IN THE PREPARATION OF ARCHITECTURAL OR ENGINEERING PLANS. THE DESIGN PROFESSIONAL MUST RECOGNIZE THAT NO DESIGN DETAIL CAN SUBSTITUTE FOR EXPERIENCED ENGINEERING AND PROFESSIONAL JUDGEMENT.

TITLE:

**DELTA®-DRAIN 9000 HI-X WITH  
TYPICAL DRAIN DETAIL**

DRAWN BY: Krzysztof Apriasz C. Tech., CPHC®

DATE: February 17, 2017  
SCALE: NTS

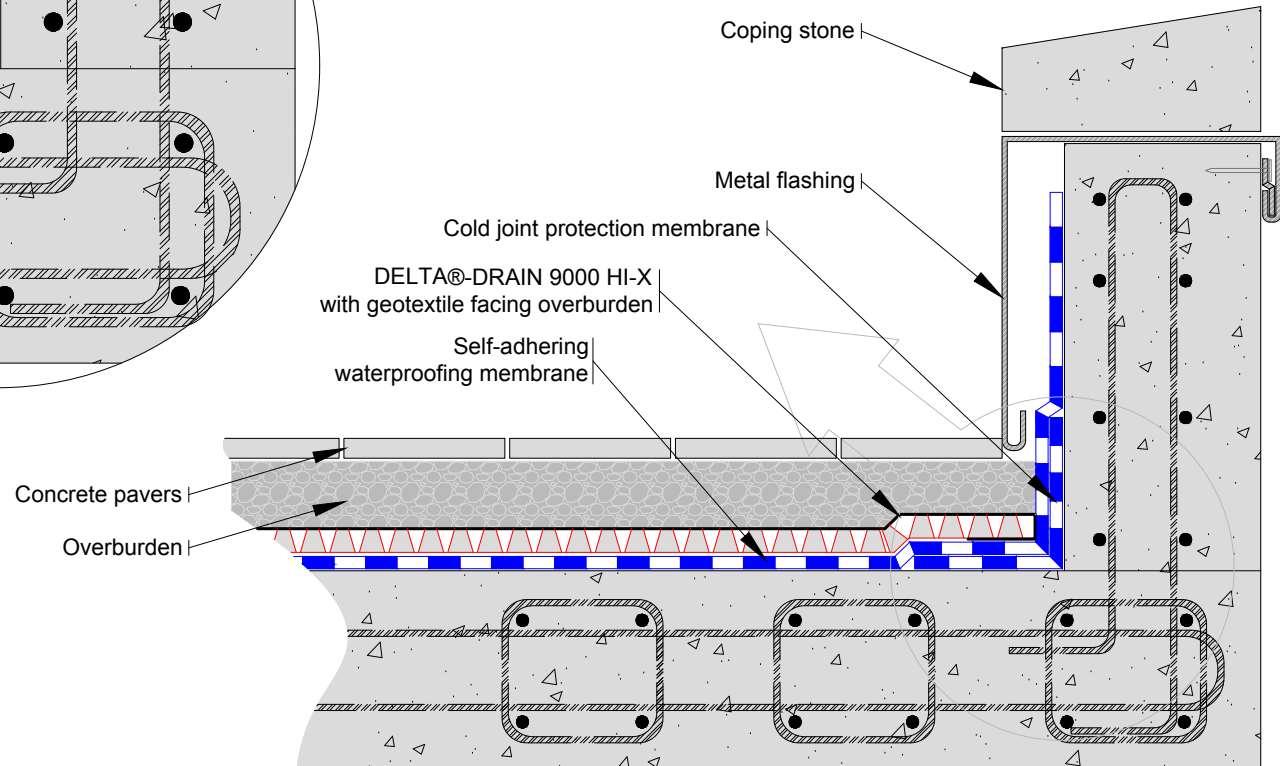
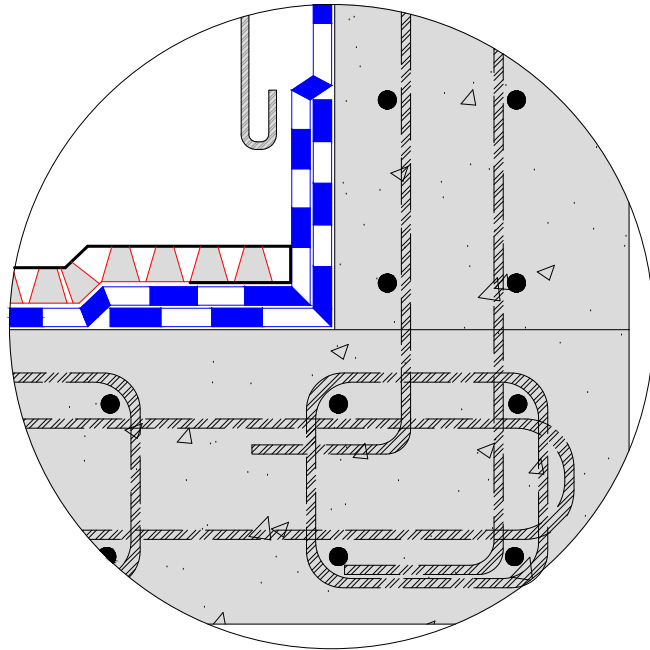
FILE NAME:  
DD9000\_2



**DELTA®**

4655 DELTA WAY BEAMSVILLE, ON.  
L3J 0T6 CANADA

Note: overburden not shown for clarity



SUBSTANTIAL EFFORT HAS BEEN MADE TO ENSURE THAT THE INFORMATION IN THIS DETAIL DRAWING IS ACCURATE. DÖRKEN SYSTEMS INC. CANNOT ACCEPT RESPONSIBILITY FOR ANY ERRORS OR OVERSIGHTS IN THE USE OF THIS MATERIAL OR IN THE PREPARATION OF ARCHITECTURAL OR ENGINEERING PLANS. THE DESIGN PROFESSIONAL MUST RECOGNIZE THAT NO DESIGN DETAIL CAN SUBSTITUTE FOR EXPERIENCED ENGINEERING AND PROFESSIONAL JUDGEMENT.

TITLE:

TYPICAL PARAPET DETAIL WITH  
DELTA®-DRAIN 9000 HI-X

DRAWN BY: Krzysztof Apriasz C. Tech., CPHC®

DATE: February 17, 2017  
SCALE: NTS

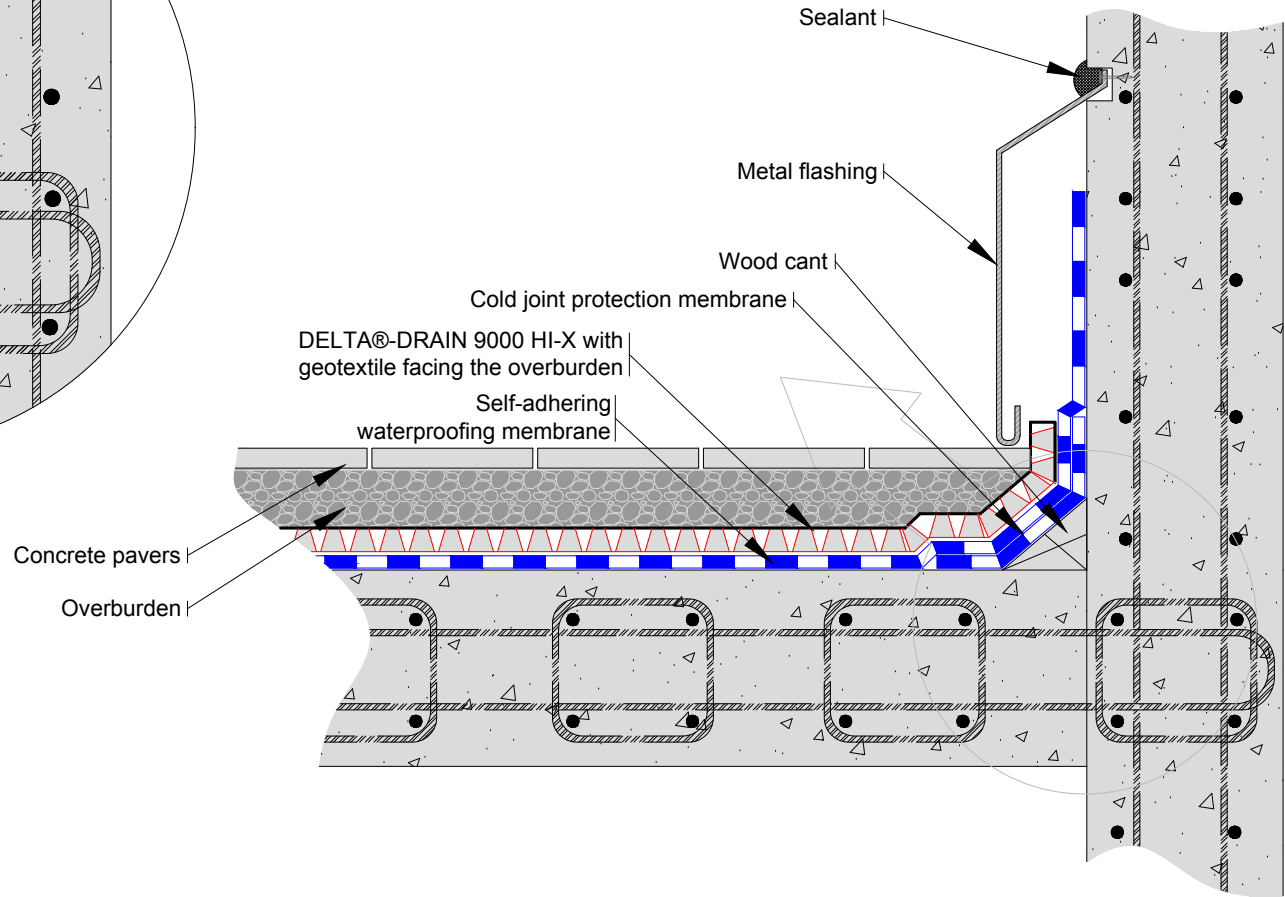
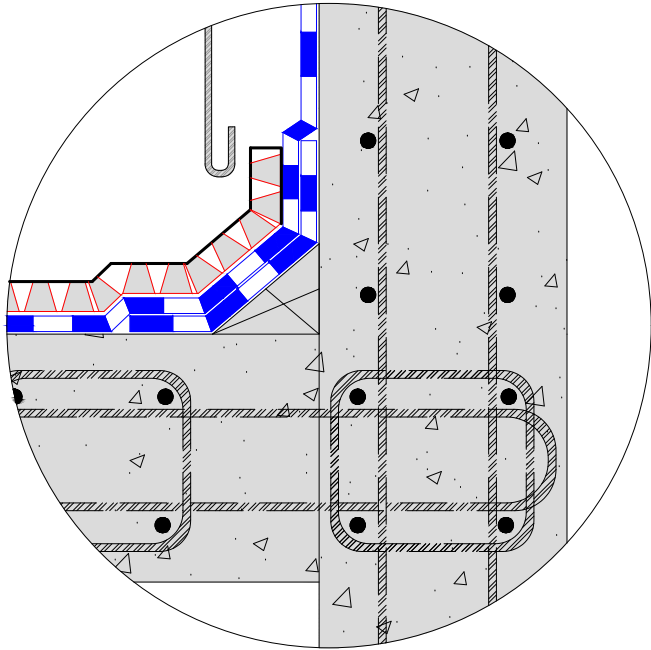
FILE NAME:  
DD9000\_3

 DÖRKEN

**DELTA®**

4655 DELTA WAY BEAMSVILLE, ON.  
L3J 0T6 CANADA

Note: overburden not shown for clarity



SUBSTANTIAL EFFORT HAS BEEN MADE TO ENSURE THAT THE INFORMATION IN THIS DETAIL DRAWING IS ACCURATE. DÖRKEN SYSTEMS INC. CANNOT ACCEPT RESPONSIBILITY FOR ANY ERRORS OR OVERSIGHTS IN THE USE OF THIS MATERIAL OR IN THE PREPARATION OF ARCHITECTURAL OR ENGINEERING PLANS. THE DESIGN PROFESSIONAL MUST RECOGNIZE THAT NO DESIGN DETAIL CAN SUBSTITUTE FOR EXPERIENCED ENGINEERING AND PROFESSIONAL JUDGEMENT.

TITLE:

### TYPICAL ROOF EDGE TERMINATION DETAIL WITH DELTA®-DRAIN 9000 HI-X

DRAWN BY: Krzysztof Apriasz C. Tech., CPHC®

DATE: February 17, 2017  
SCALE: NTS

FILE NAME:  
DD9000\_4

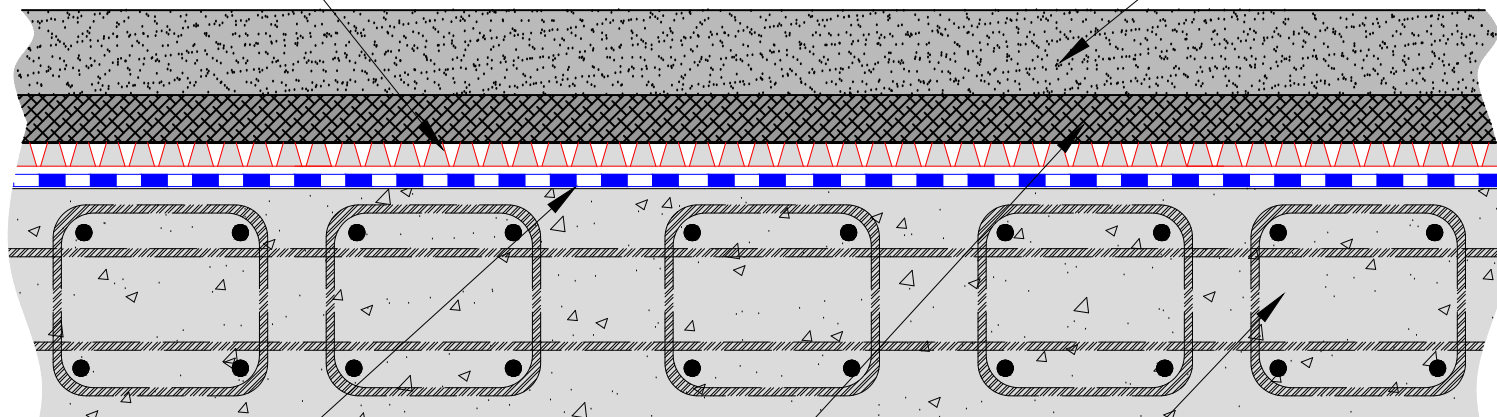
 DÖRKEN

**DELTA®**

4655 DELTA WAY BEAMSVILLE, ON.  
L3J 0T6 CANADA

DELTA®-DRAIN 9000 HI-X  
 drainage composite maximum  
 temperature exposure+176°F (+80°C)

Asphalt layer



Waterproofing membrane  
 if required (by others)

High temperature  
 protection board (by others)

Concrete deck

SUBSTANTIAL EFFORT HAS BEEN MADE TO ENSURE THAT THE INFORMATION IN THIS DETAIL DRAWING IS ACCURATE. DÖRKEN SYSTEMS INC. CANNOT ACCEPT RESPONSIBILITY FOR ANY ERRORS OR OVERSIGHTS IN THE USE OF THIS MATERIAL OR IN THE PREPARATION OF ARCHITECTURAL OR ENGINEERING PLANS. THE DESIGN PROFESSIONAL MUST RECOGNIZE THAT NO DESIGN DETAIL CAN SUBSTITUTE FOR EXPERIENCED ENGINEERING AND PROFESSIONAL JUDGEMENT.

TITLE:

DELTA®-DRAIN 9000 HI-X IN A  
 HOT ASPHALT APPLICATION

 DÖRKEN

**DELTA®**

DRAWN BY: Krzysztof Apriasz C. Tech., CPHC®

DATE: February 17, 2017  
 SCALE: NTS

FILE NAME:  
 DD9000\_5

4655 DELTA WAY BEAMSVILLE, ON.  
 L3J 0T6 CANADA